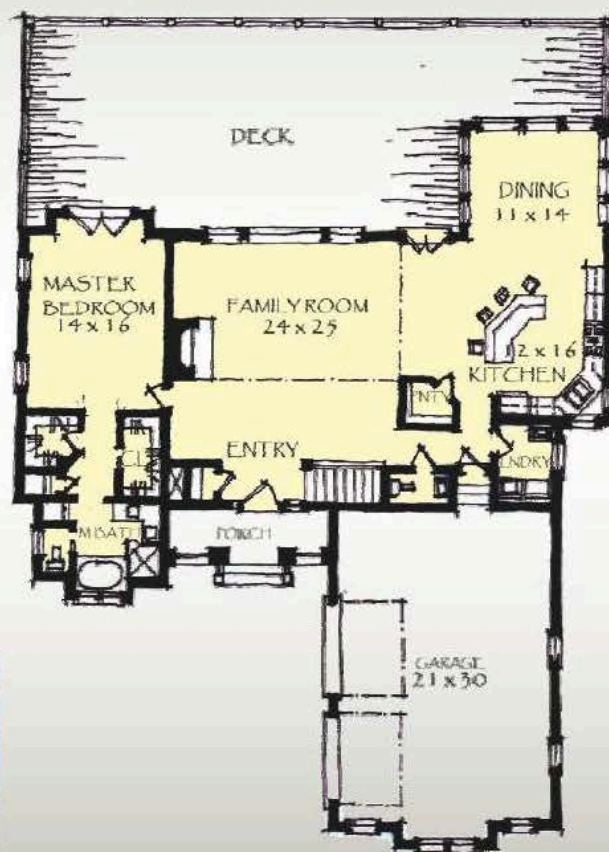
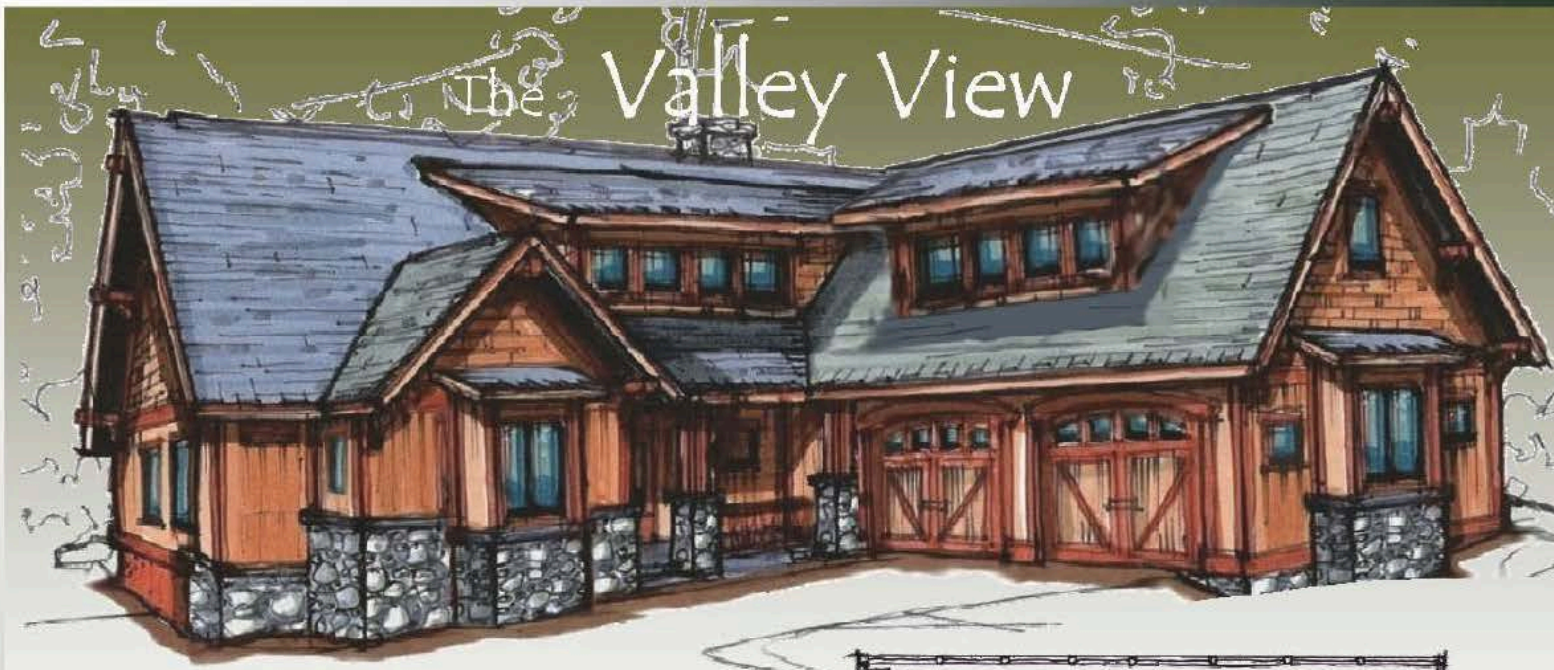
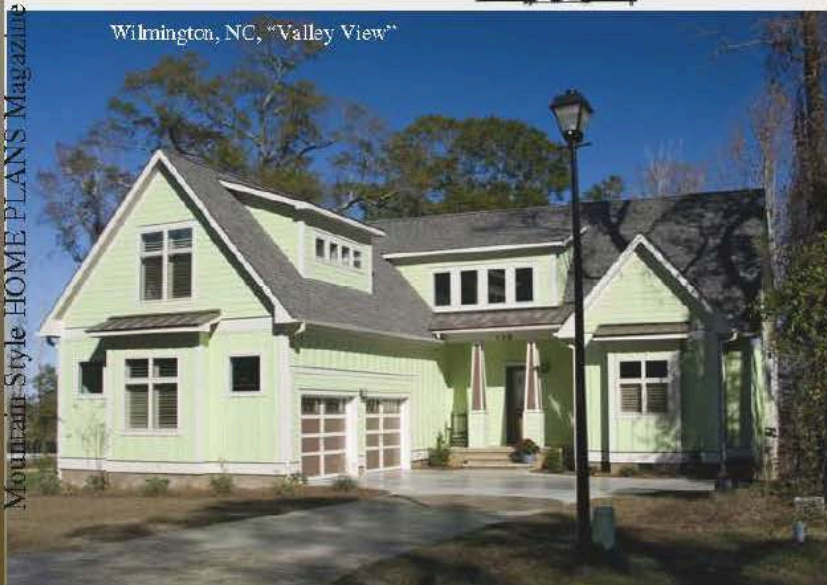


The Valley View



Wilmington, NC, "Valley View"



58' wide by 70' deep

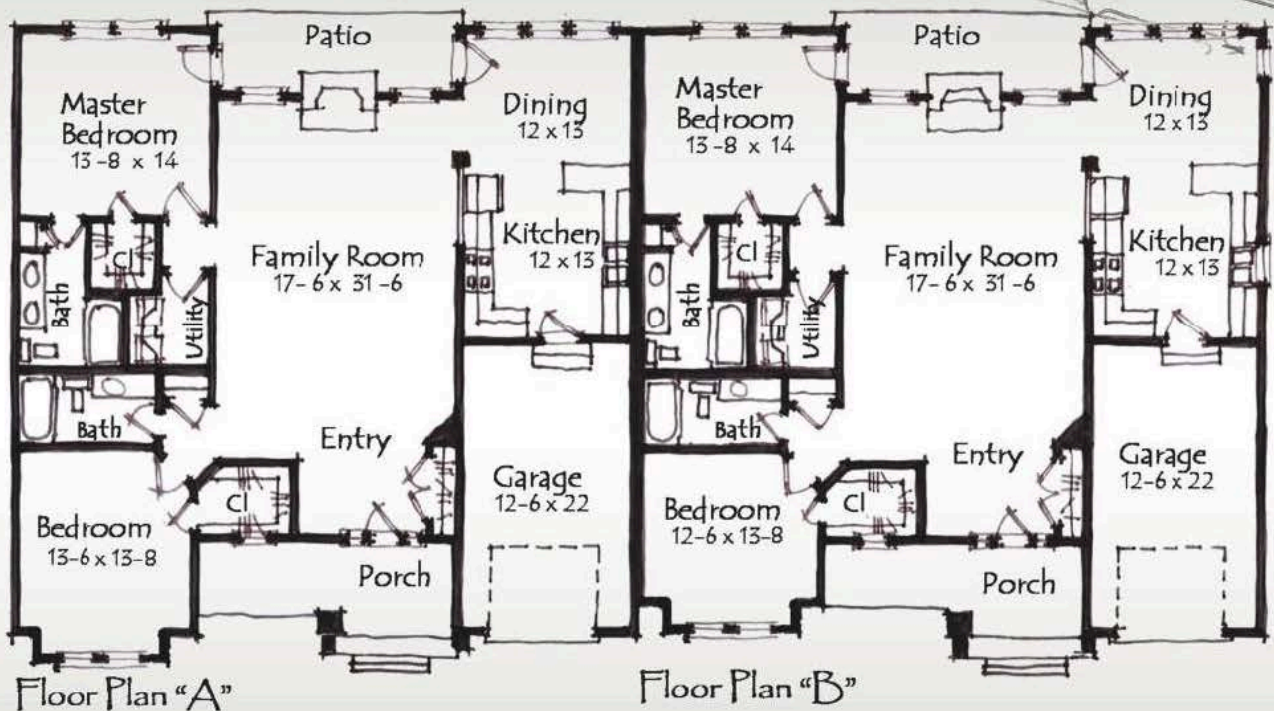
Two story

Main level.....1679 sf

Upper level.....986 sf

Total square footage.....2665 sf

The Tudor Lodge



Memories await you as you are welcomed by the secure stone covered entries.

These 2 bedroom 2 bath Rustic mountain attached homes offer Spacious bedrooms with an open layout. American mountain style accents and stone features add to the rustic foyer and carried throughout.....Enjoy!

88' wide by 44' deep

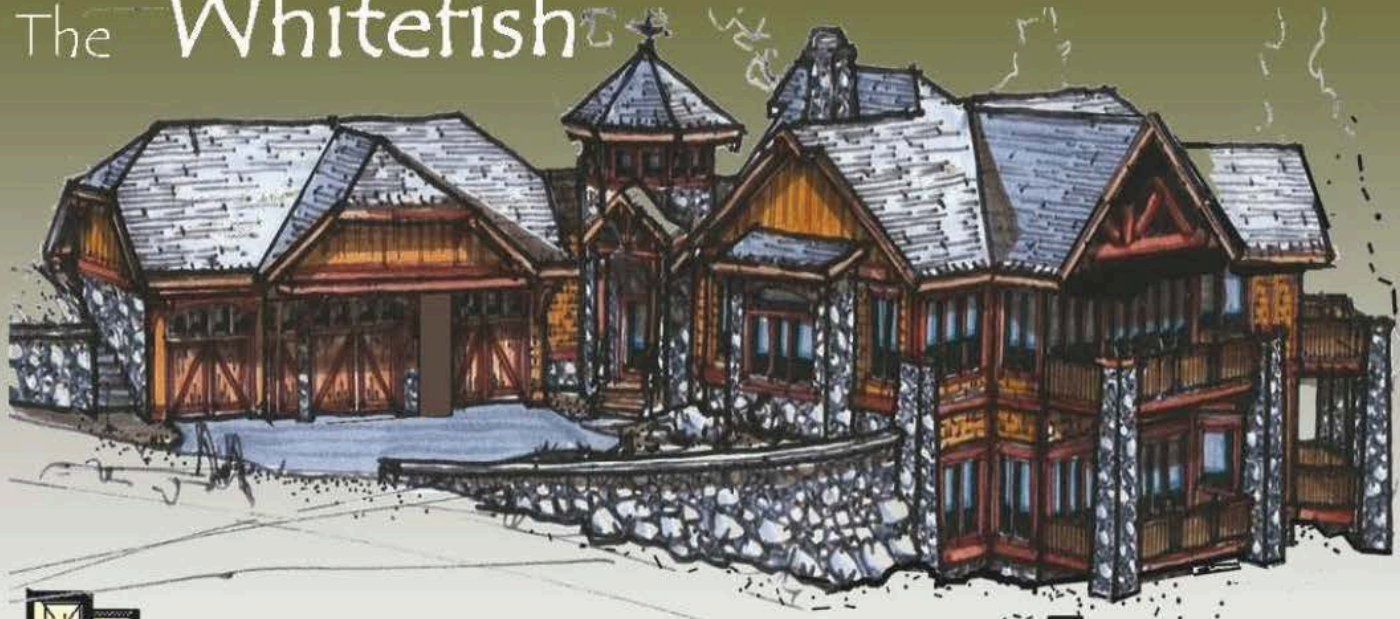
Single level

Units A 1506 sf

Units B 1488 sf

Total duplex unit square footage....2994 sf

The Whitefish



Enjoy the moment as you are welcomed by the secure stone covered entry.

This 3 bedroom 2 1/2 bath Rustic mountain home offers the grand views to the front and rear. American mountain style accents and stone features add to the rustic foyer and carried throughout...grab the views!

112' x 64'

Main level.....2640sf

Lower level.....2510 sf

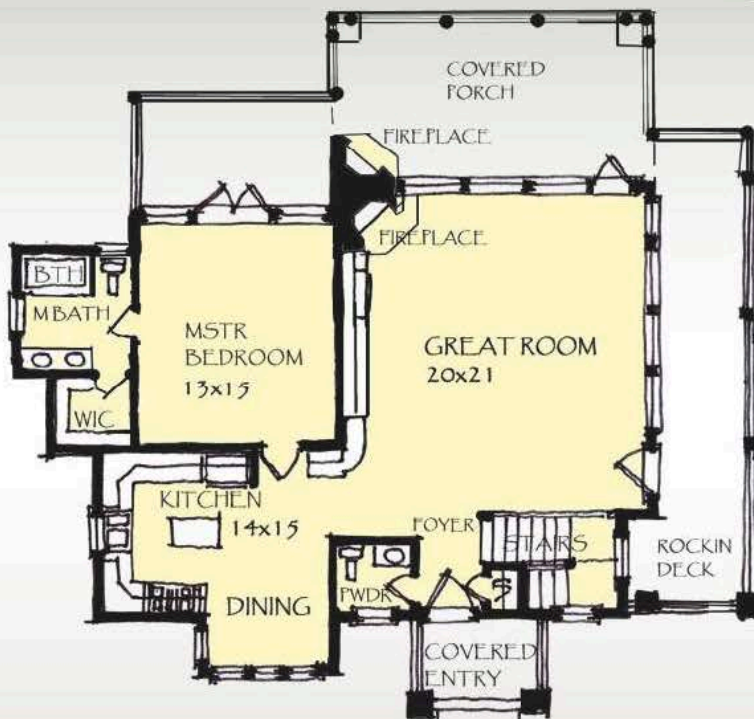
Total square footage.....5150 sf



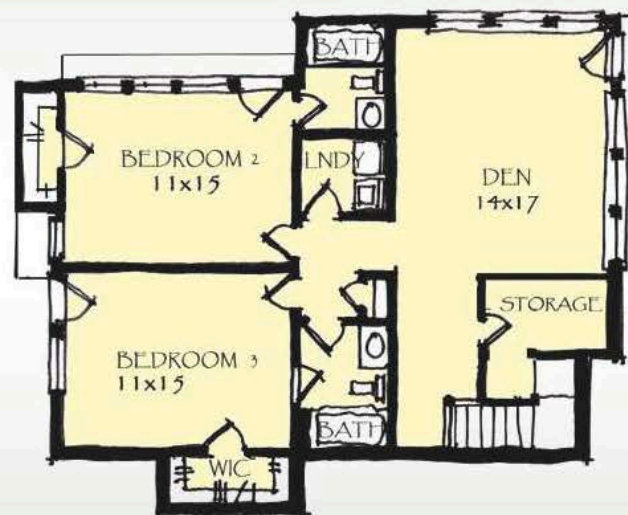
Whitefish Montana "Whitefish"



The Vista Ridge



Main floor



Lower floor



Step back in time to a grander simpler day as you are welcomed by the large covered entry.

This 3 bedroom 2 1/2 bath Rustic mountain home offers the grand views to the rear. American mountain style accents and stone features add to the rustic foyer and carried throughout...What a view!

115' wide by 82' deep

Daylight lower level

Main level.....938sf

Lower level.....949 sf

Total heated square foot-
age".....1887sf

The Vista High

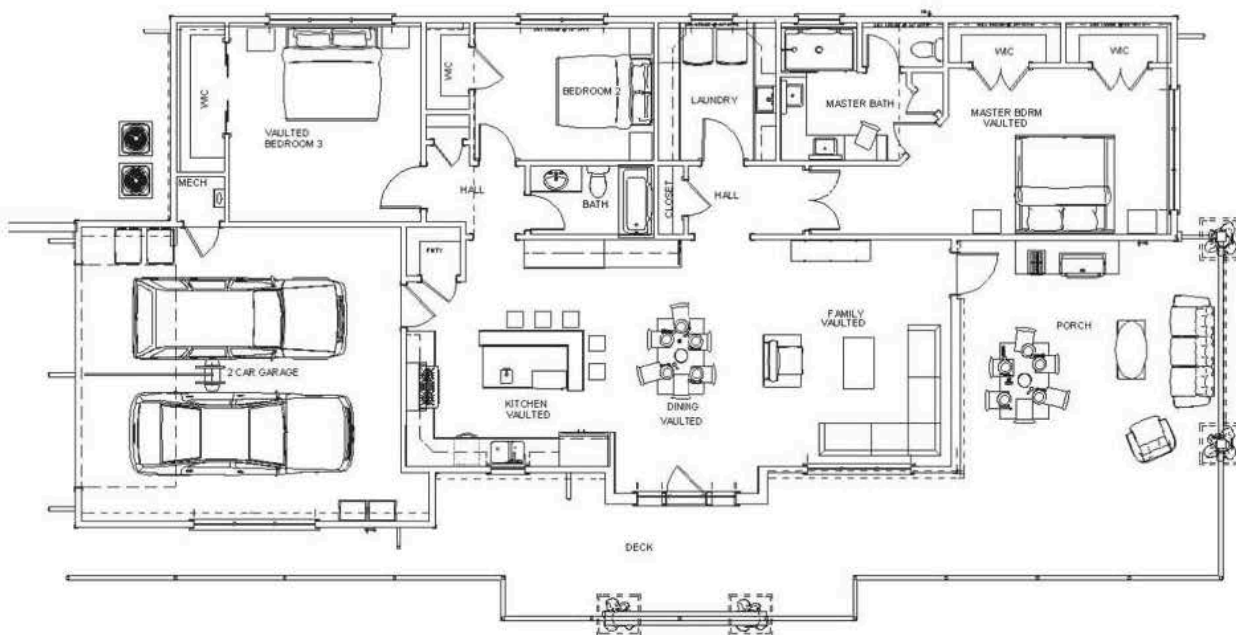


Enjoy the moment as you are welcomed by the secure stone covered entry.

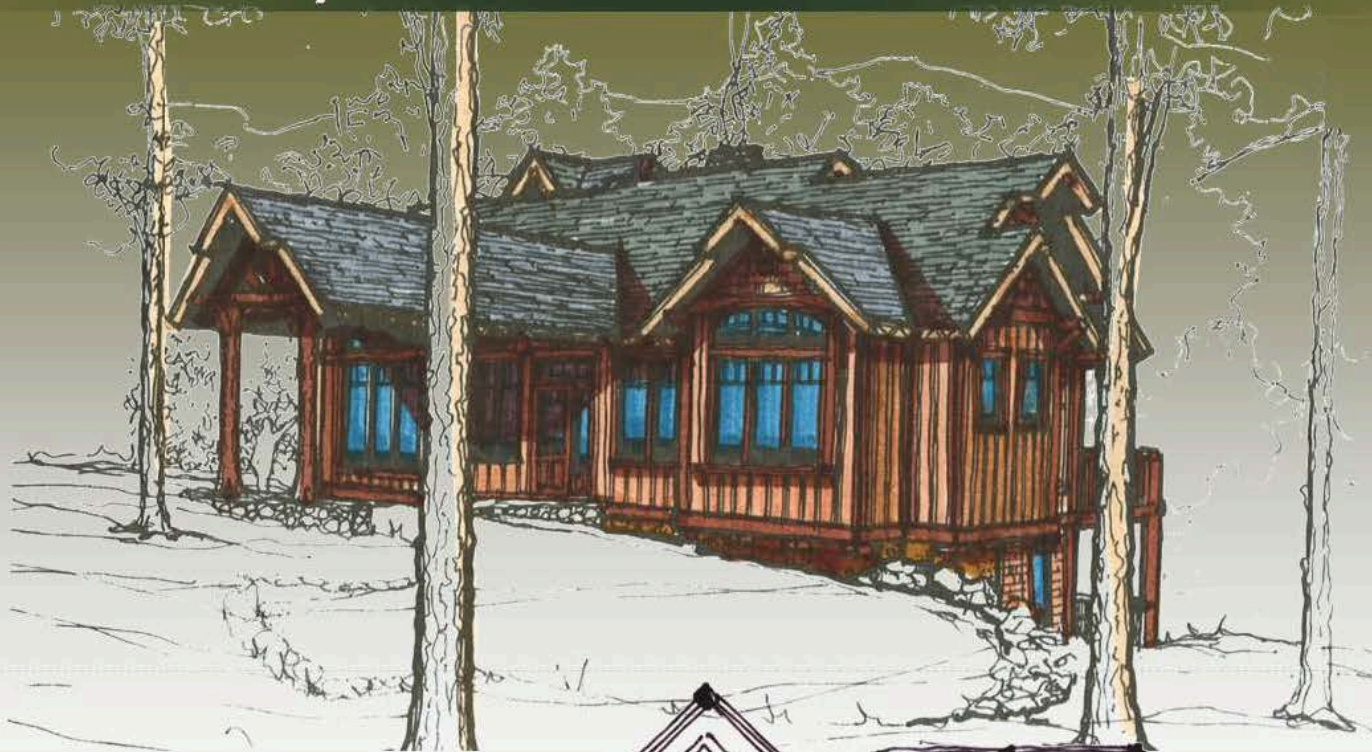
This 3 bedroom 3 1/2 bath Rustic mountain home offers the grand views to the front and rear. American mountain style accents and stone features add to the rustic foyer and carried throughout.....

MAIN LEVEL.....1870 SF

TOTAL HEATED SF.....1870 SF



The Ledgerview



Step back in time to a grander simpler day as you are welcomed by the large covered entry.

This 2 bedroom 2 1/2 bath Rustic mountain home offers the grand views to the rear. Great for steep slope. American mountain style accents and stone features add to the rustic foyer and carried throughout...What a view!

Daylight lower level

Main level.....973 sf

Lower level.....882sf

Total heated square footage".....1855sf

The Viewpoint



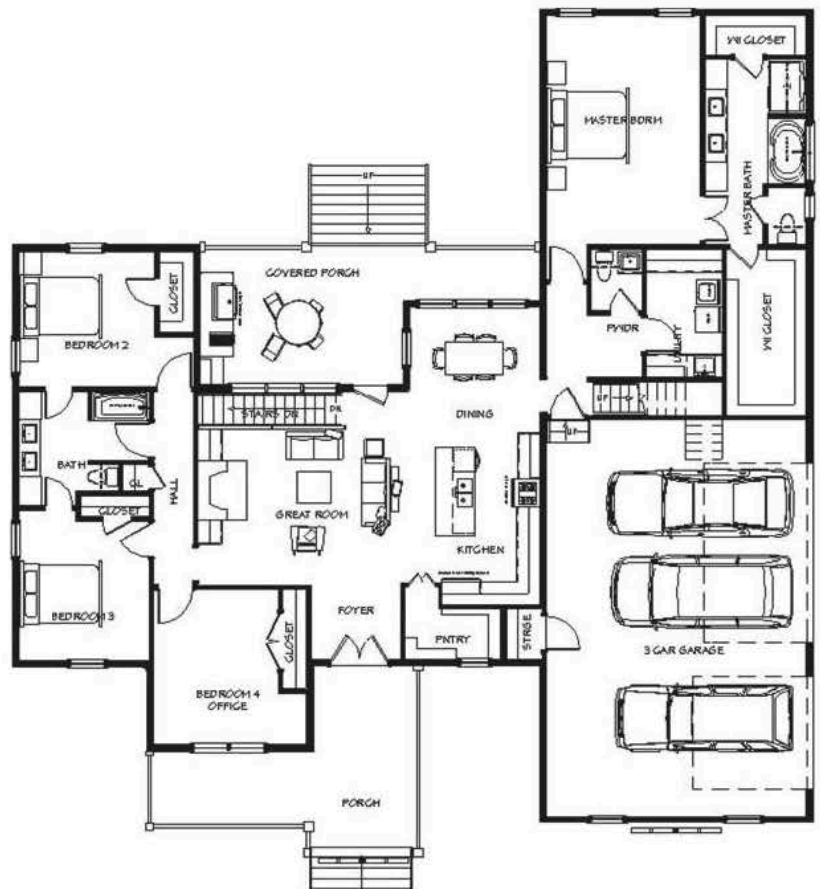
Enjoy the moment as you are welcomed by the secure stone covered entry.

This 3 bedroom 3 1/2 bath Rustic mountain home offers the grand views to the front and rear. American mountain style accents and stone features add to the rustic foyer and carried throughout.....

MAIN LEVEL.....2395 SF

BONUS ROOM.....512 SF

TOTAL HSF.....2907 SF



The Town Mountain



Enjoy the moment as you are welcomed by the secure stone covered entry.

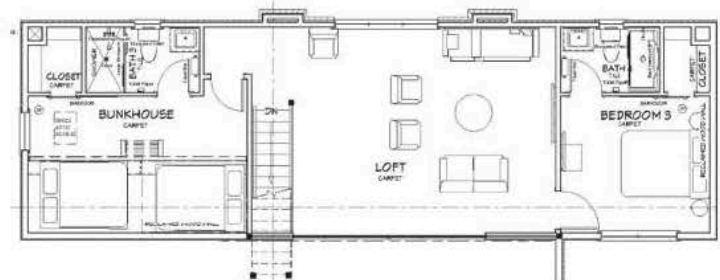
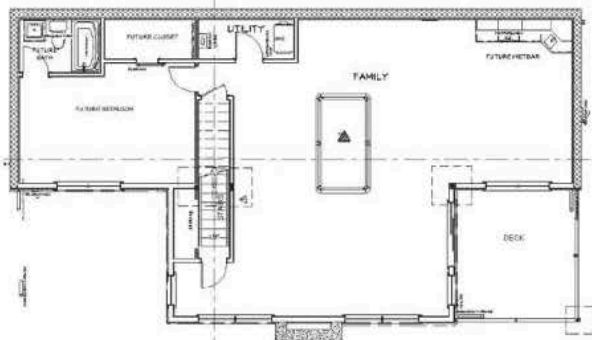
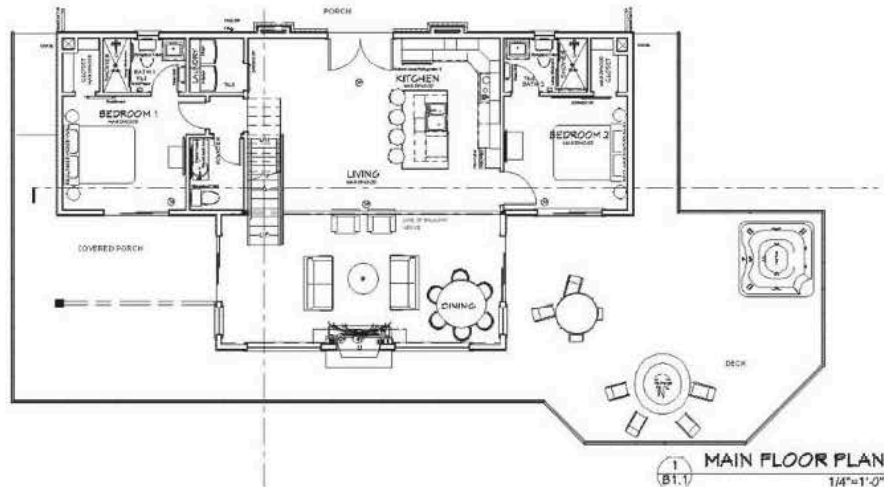
This 3 bedroom 3 1/2 bath Rustic mountain home offers the grand views to the front and rear. American mountain style accents and stone features add to the rustic foyer and carried throughout.....

MAIN LEVEL.....1230 SF

UPPER LEVEL.....887 SF

TOTAL HEATED SF.....2117 SF

UNFIN BASEMENT.....1270 SF



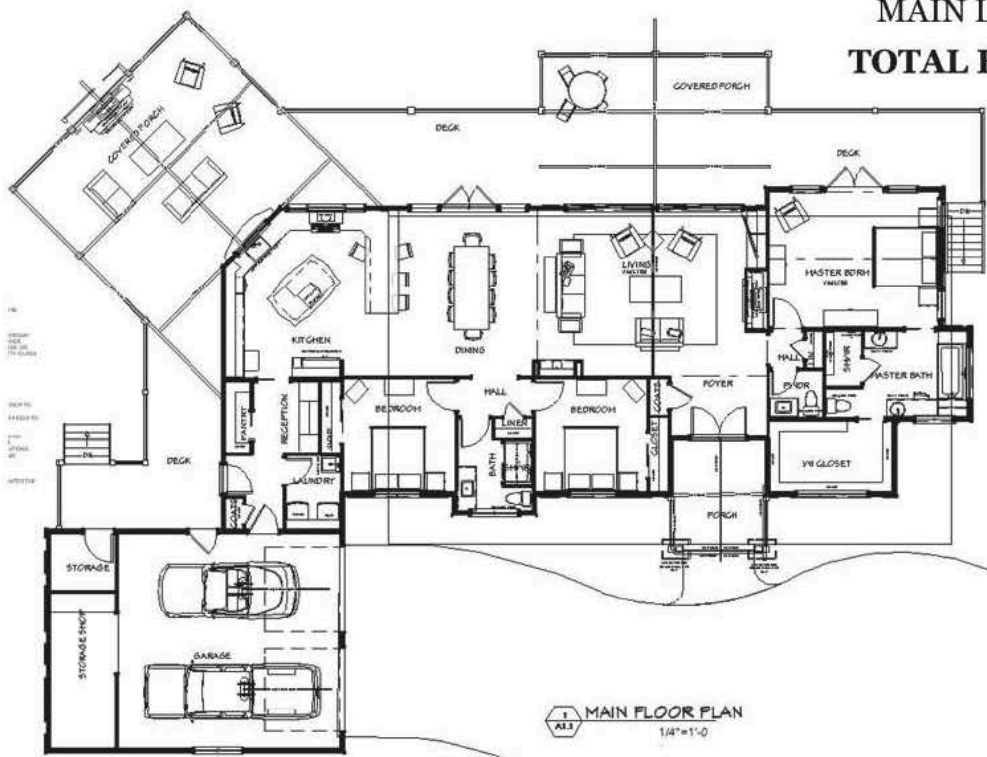


The Vignette

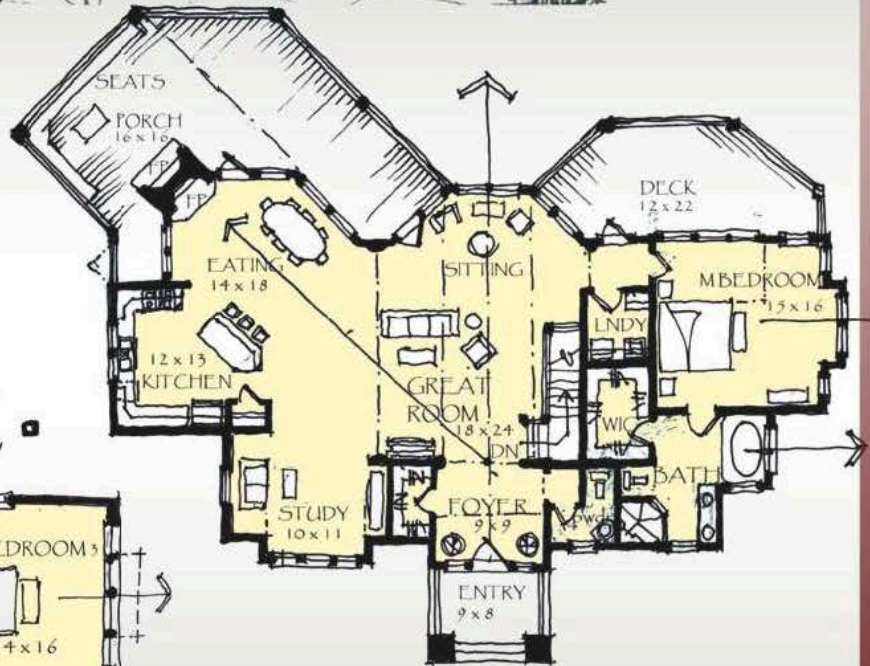
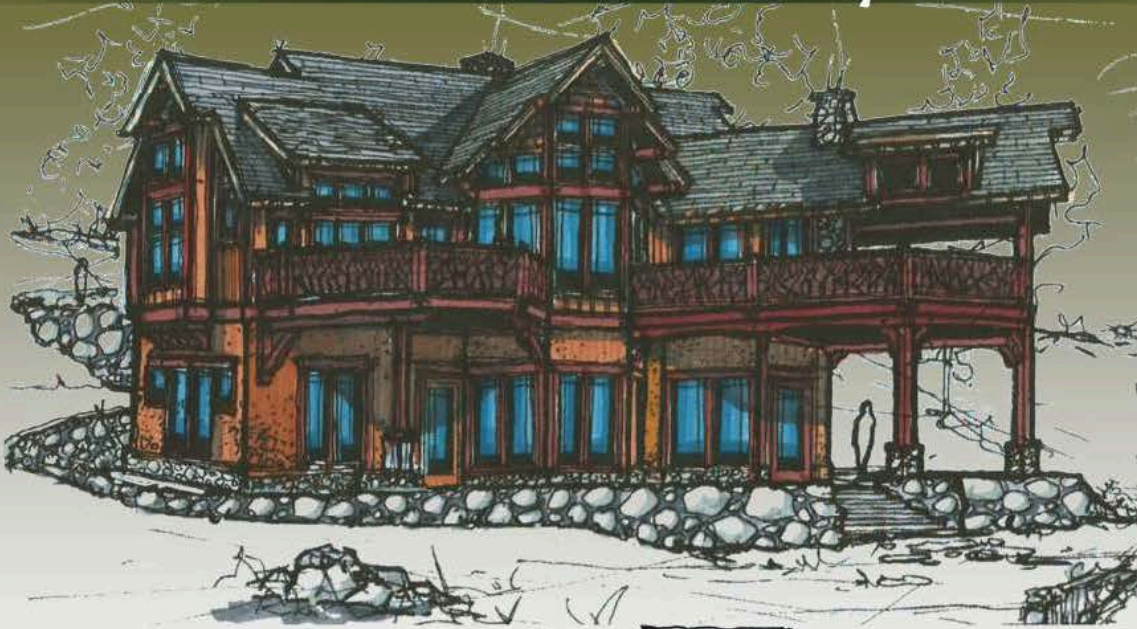
Enjoy the moment as you are welcomed by the secure stone covered entry.

This 3 bedroom 3 1/2 bath Rustic mountain home offers the grand views to the front and rear. American mountain style accents and stone features add to the rustic foyer and carried throughout.....

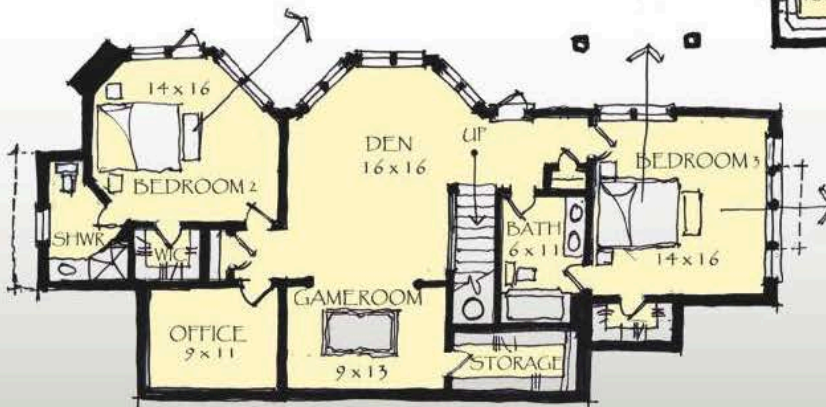
MAIN LEVEL.....2410 SF
TOTAL HEATED SF.....2410 SF



The Simms Valley



Main floor



Lower floor



Step back in time to a grander simpler day as you are welcomed by the large covered entry.

This 3 bedroom 3 1/2 bath Rustic mountain home offers the grand views to the rear. American mountain style accents and stone features add to the rustic foyer and carried throughout...What a view!

Daylight lower level

Main level.....1152 sf

Lower level.....973 sf

Total heated square footage''.....2125 sf



The Reynolds Vista



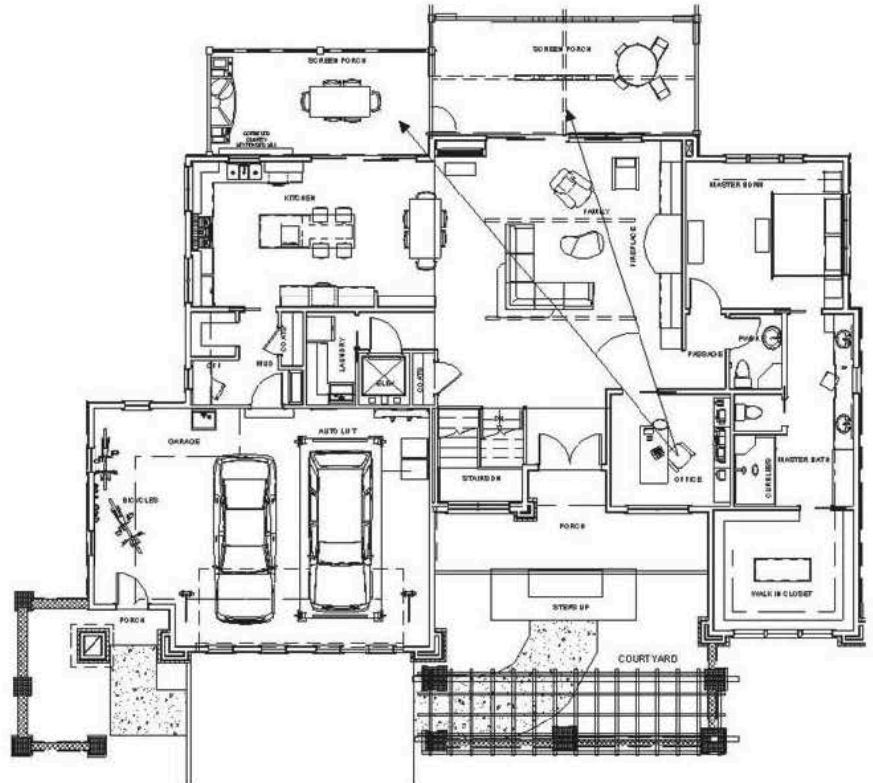
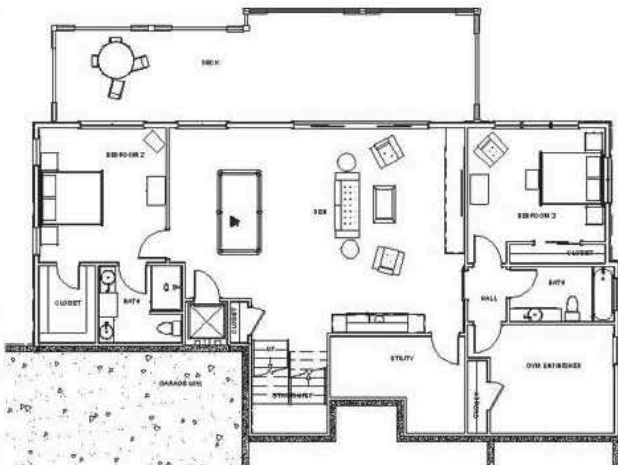
Enjoy the moment as you are welcomed by the secure stone covered entry.

This 3 bedroom 3 1/2 bath Rustic mountain home offers the grand views to the front and rear. American mountain style accents and stone features add to the rustic foyer and carried throughout.....

MAIN LEVEL.....2218 SF

LOWER LEVEL.....1516 SF

TOTAL HEATED SF.....3734 SF





The Smoky Ridge

Enjoy the moment as you are welcomed by the secure stone covered entry.

This 3 bedroom 3 1/2 bath Rustic mountain home offers the grand views to the front and rear. American mountain style accents and stone features add to the rustic foyer and carried throughout...grab the views !

55' wide by 64' deep

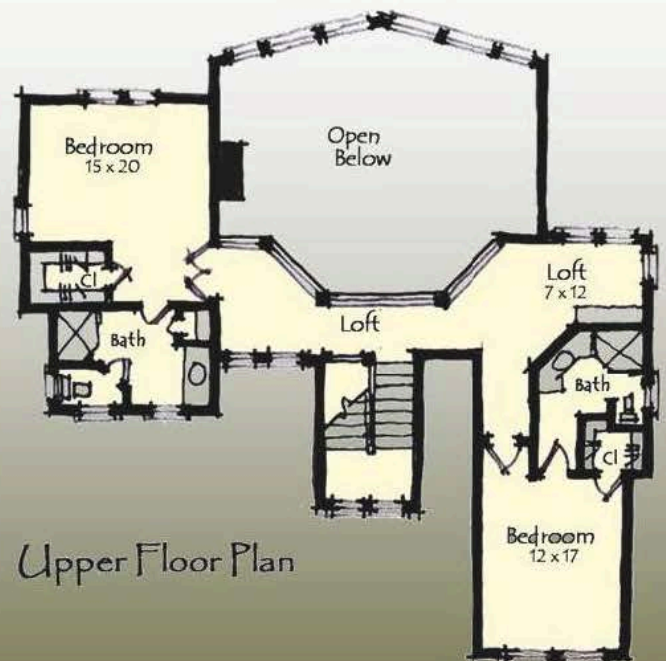
Main level.....1788 sf

Upper level.....948 sf

Total heated square footage.....2736 sf

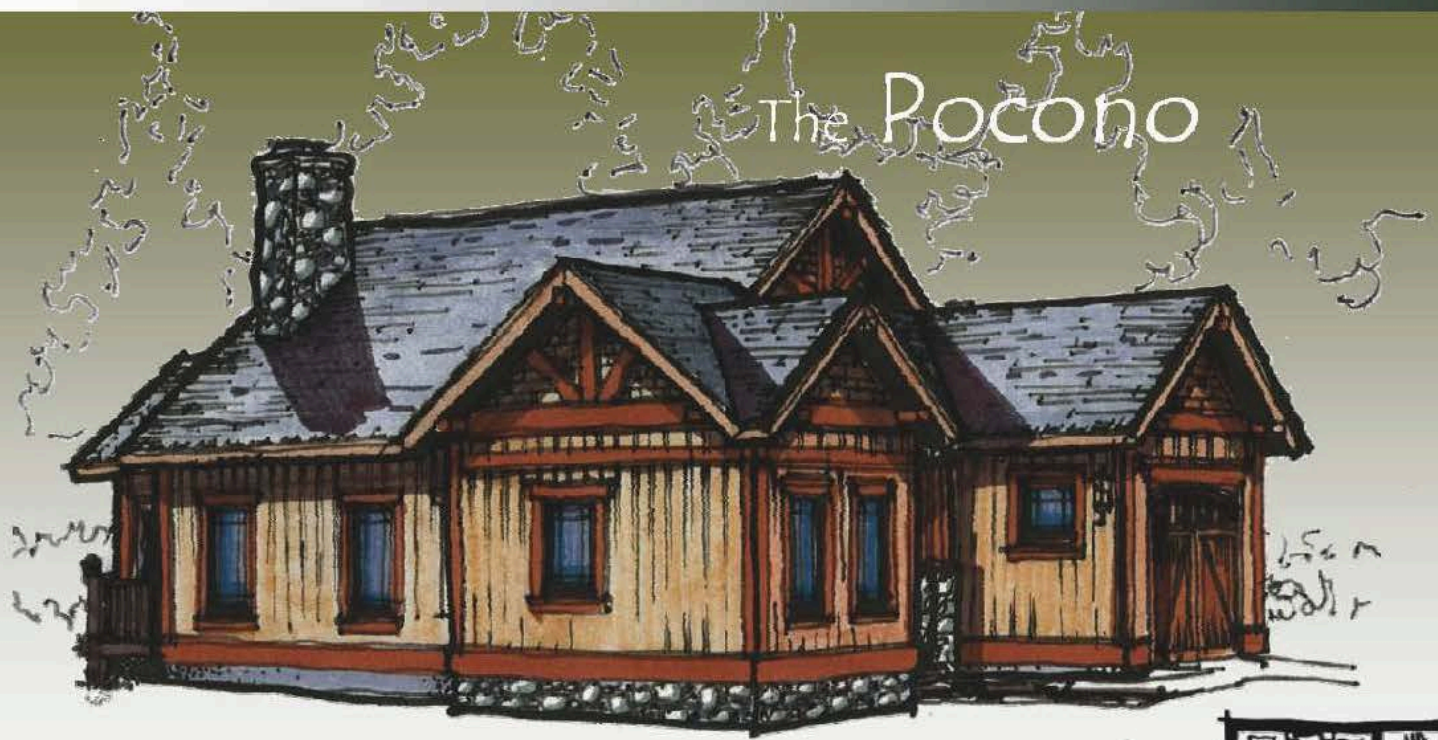


Main Floor Plan



Upper Floor Plan

The Pocono



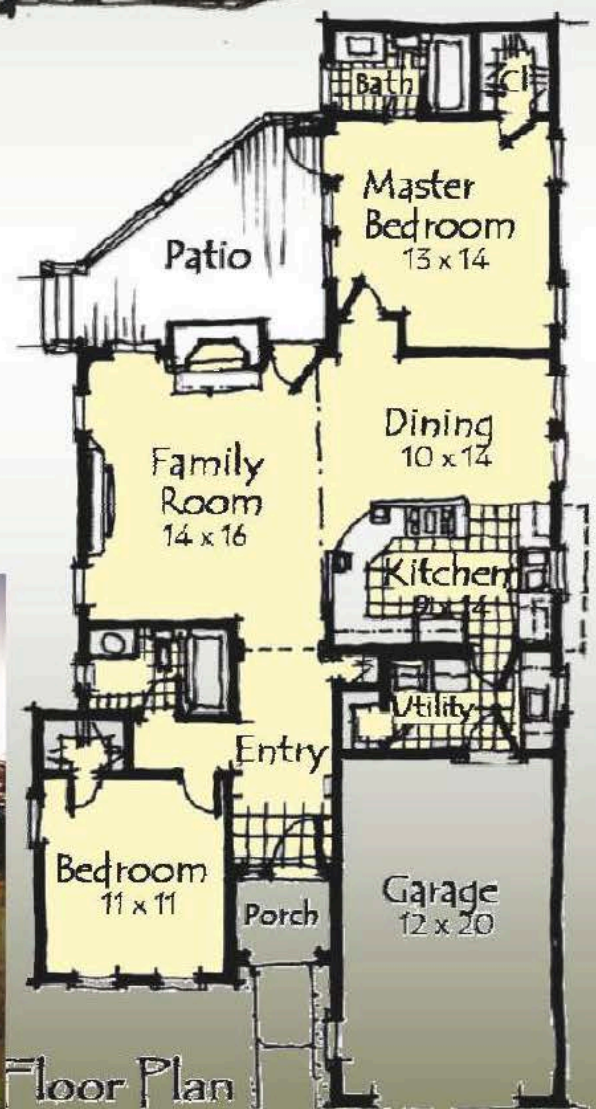
Grab the moment as you are welcomed by the secure covered entry.

This 2 bedroom 2 bath Rustic mountain home offers the grand views to the rear and side for those tighter lots. American mountain style accents and stone features add to the rustic foyer and are carried throughout...Relax!

32' wide by 68' deep

Main level.....1098 sf

Total heated square footage.....1098 sf



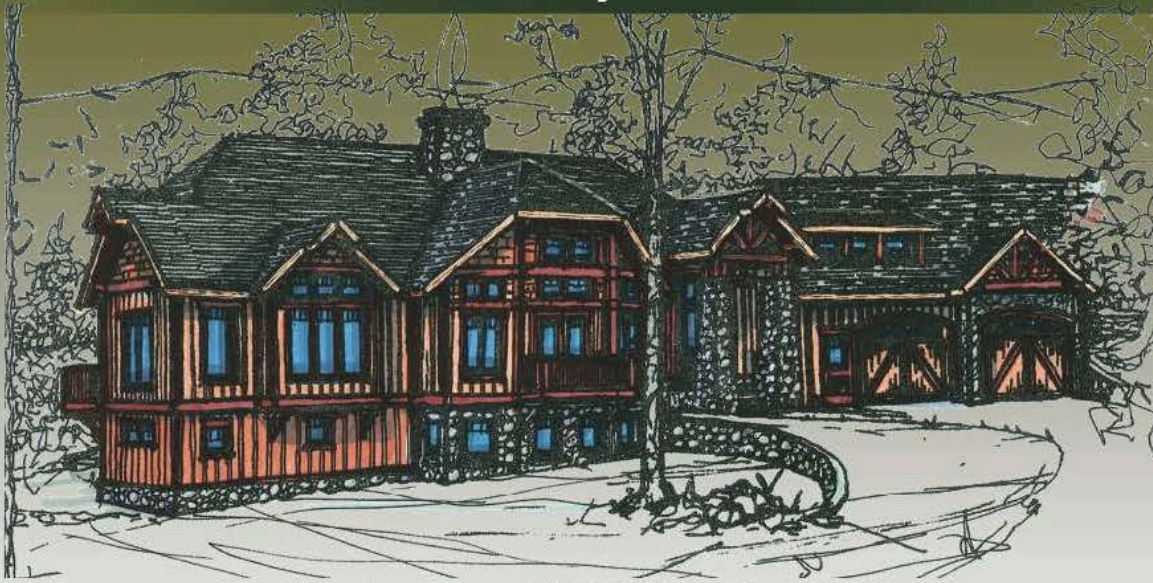
Floor Plan



Kalispell, Montana "ridgeside"

Mountain Style Homes

The Ridge Runner



Main level.....1981sf
 Lower level.....1289 sf
 Total square footage....3270 sf



The Mountain Mod



Enjoy the moment as you are welcomed by the secure stone covered entry.

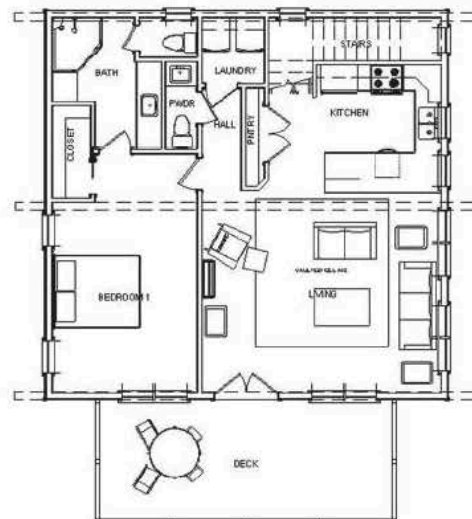
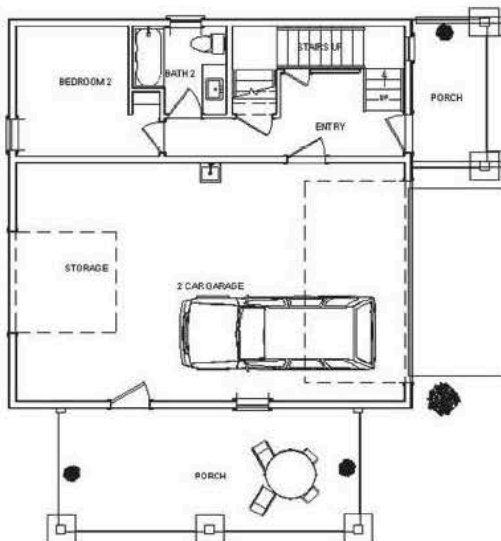
This 3 bedroom 3 1/2 bath Rustic mountain home offers the grand views to the front and rear. American mountain style accents and stone features add to the rustic foyer and carried throughout.....

MAIN LEVEL.....925 SF

LOWER LEVEL.....345 SF

LOFT LEVEL.....200 SF

TOTAL HEATED SF.....1470 SF



The Mountain Lakeview



Enjoy the moment as you are welcomed by the secure stone covered entry.

This 3 bedroom 3 1/2 bath Rustic mountain home offers the grand views to the front and rear. American mountain style accents and stone features add to the rustic foyer and carried throughout.....

MAIN LEVEL.....1864 SF

LOWER LEVEL UNFIN.....1754 SF

TOTAL HEATED SF.....1864 SF



The Old School

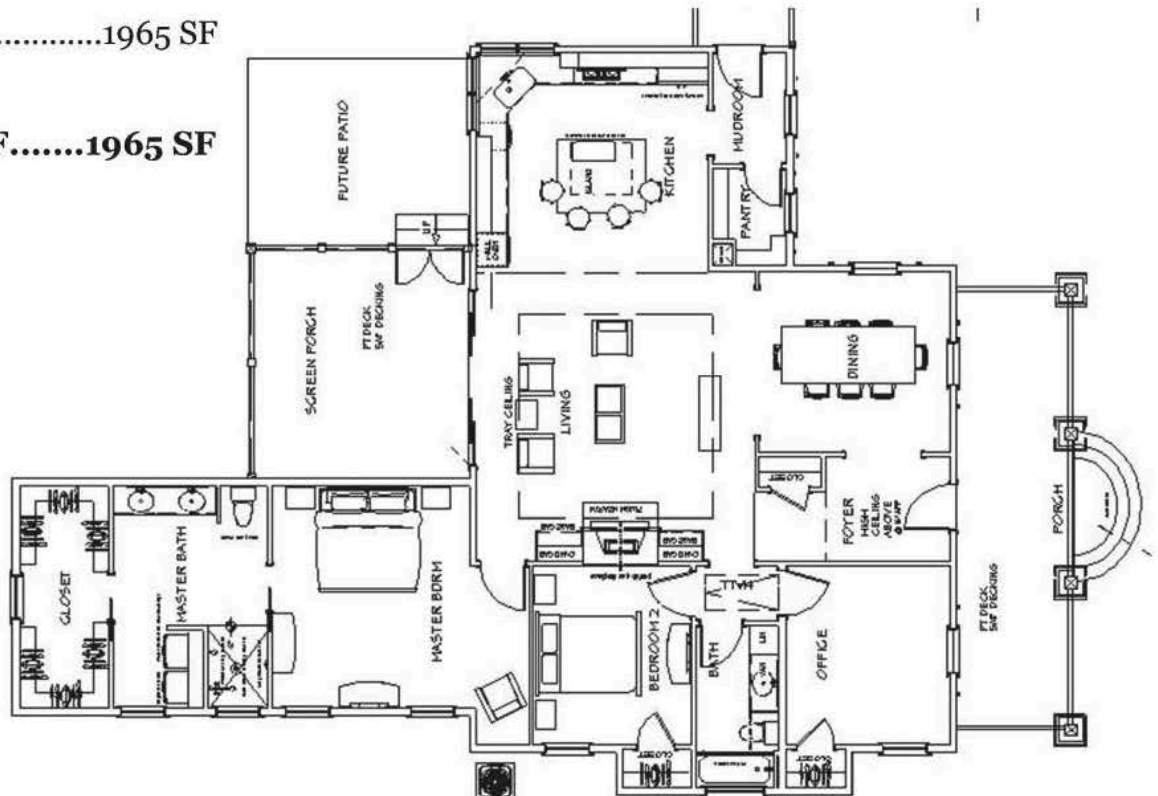


Enjoy the moment as you are welcomed by the secure stone covered entry.

This 3 bedroom 3 1/2 bath Rustic mountain home offers the grand views to the front and rear. American mountain style accents and stone features add to the rustic foyer and carried throughout.....

MAIN LEVEL.....1965 SF

TOTAL HEATED SF.....1965 SF



The Mod Farm

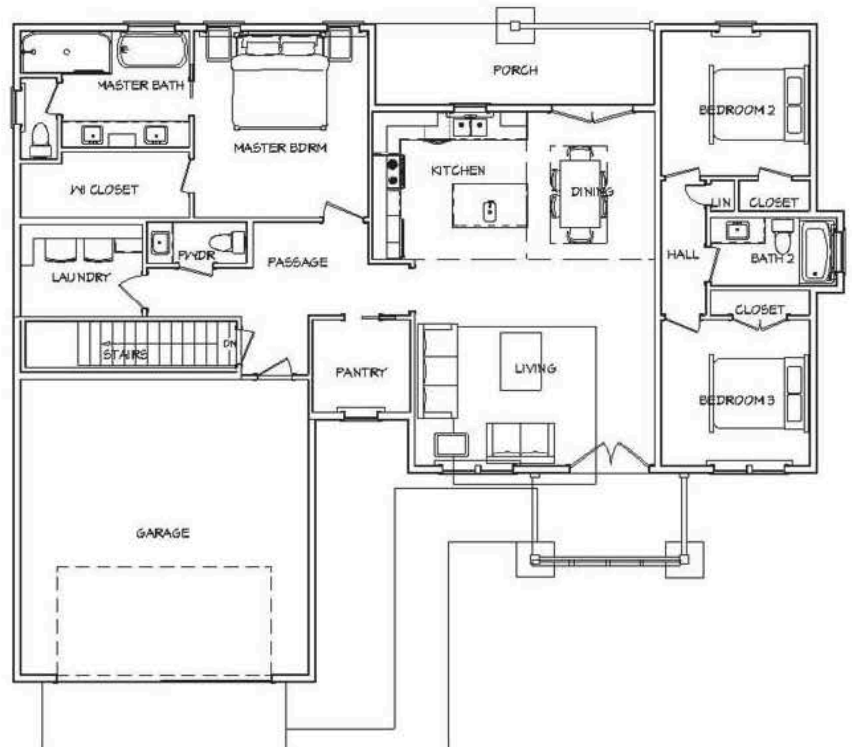


Enjoy the moment as you are welcomed by the secure stone covered entry.

This 3 bedroom 3 1/2 bath Rustic mountain home offers the grand views to the front and rear. American mountain style accents and stone features add to the rustic foyer and carried throughout.....

MAIN LEVEL.....1645 SF

LOWER LEVE (unfin).....1500 + - SF



The Old Studio



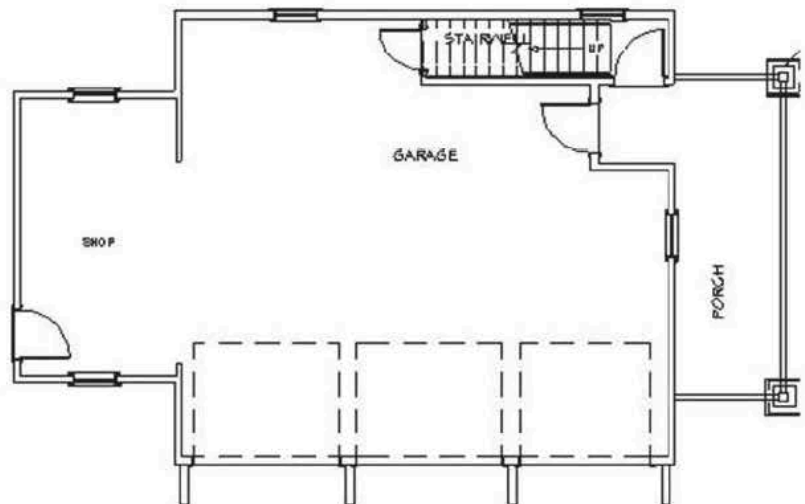
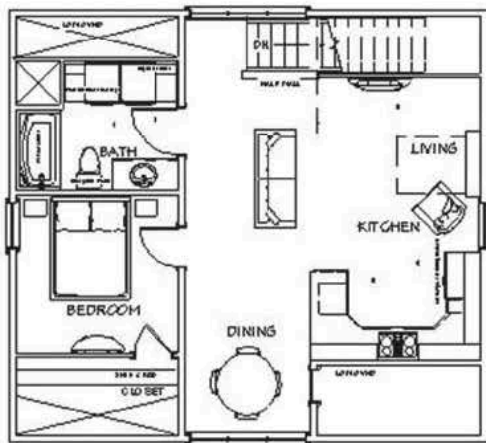
Enjoy the moment as you are welcomed by the secure stone covered entry.

This 3 bedroom 3 1/2 bath Rustic mountain home offers the grand views to the front and rear. American mountain style accents and stone features add to the rustic foyer and carried throughout.....

MAIN LEVEL.....20 SF

UPPER LEVEL.....642 SF

TOTAL HEATED SF.....662 SF



The Charleston



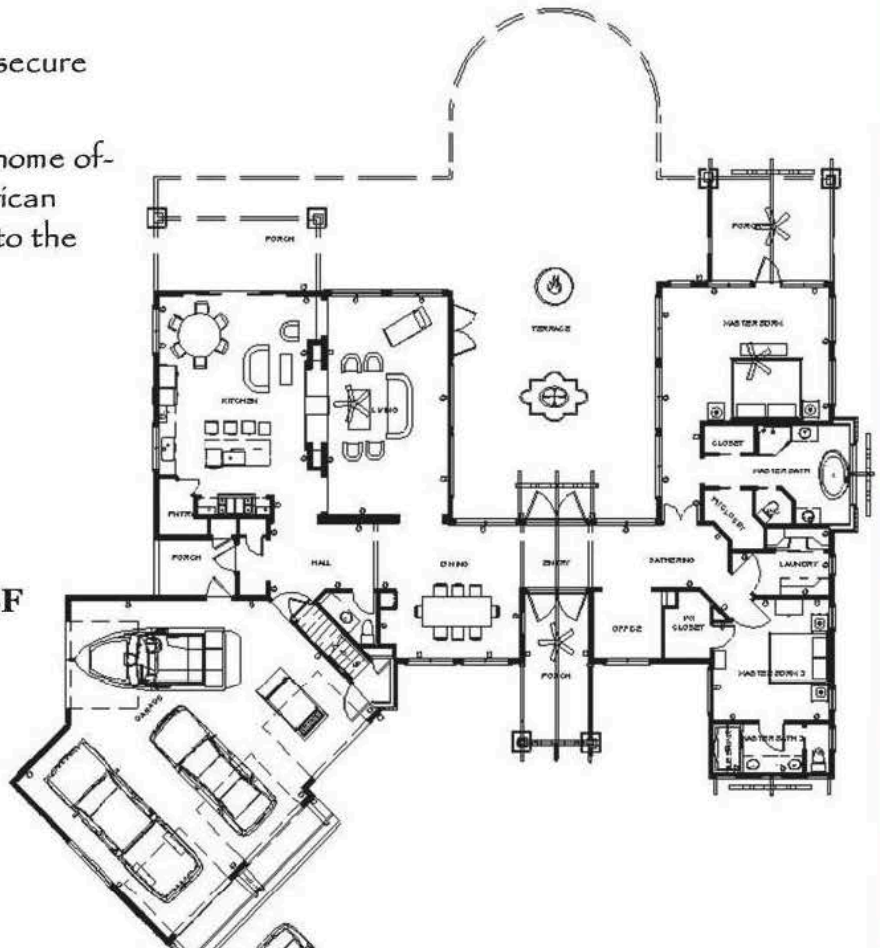
Enjoy the moment as you are welcomed by the secure stone covered entry.

This 3 bedroom 3 1/2 bath Rustic mountain home offers the grand views to the front and rear. American mountain style accents and stone features add to the rustic foyer and carried throughout.....

MAIN LEVEL.....2,568 SF

UPPER BONUS LEVEL.....620 SF

TOTAL HSF.....3,188 SF



The Vista Mod



Enjoy the moment as you are welcomed by the secure stone covered entry.

This 3 bedroom 3 1/2 bath Rustic mountain home offers the grand views to the front and rear. American mountain style accents and stone features add to the rustic foyer and carried throughout.....

MAIN LEVEL.....1504 SF

LOWER LEVEL.....705 SF

TOTAL HEATED SF.....2209 SF





The Vista Cup



Enjoy the moment as you are welcomed by the secure stone covered entry.

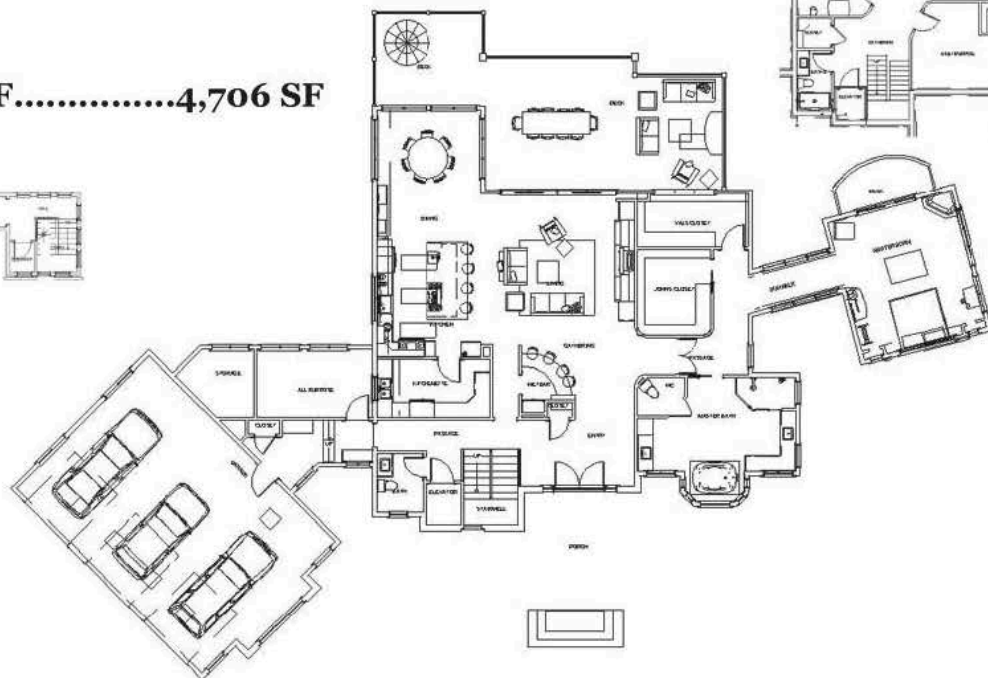
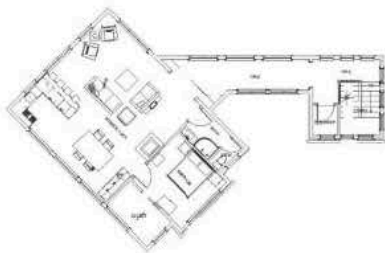
This 3 bedroom 3 1/2 bath Rustic mountain home offers the grand views to the front and rear. American mountain style accents and stone features add to the rustic foyer and carried throughout.....

MAIN LEVEL.....2,722 SF

LOWER LEVEL.....1,984 SF

UPPER LEVEL(BONUS).....1,221 SF

TOTAL HEATED SF.....4,706 SF

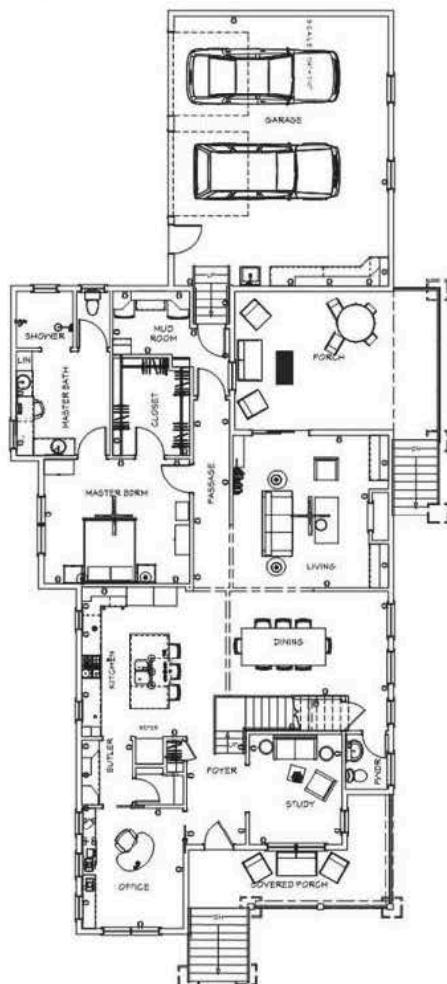


The Vossler View



Enjoy the moment as you are welcomed by the secure stone covered entry.

This 3 bedroom 3 1/2 bath Rustic mountain home offers the grand views to the front and rear. American mountain style accents and stone features add to the rustic foyer and carried throughout.....



Main level.....2029 sf

Upper level.....850 sf

Basement level.....1527 sf

Total square footage.....2879 sf



The "Westcreek"

Enjoy the moment as you are welcomed by the secure stone covered entry.

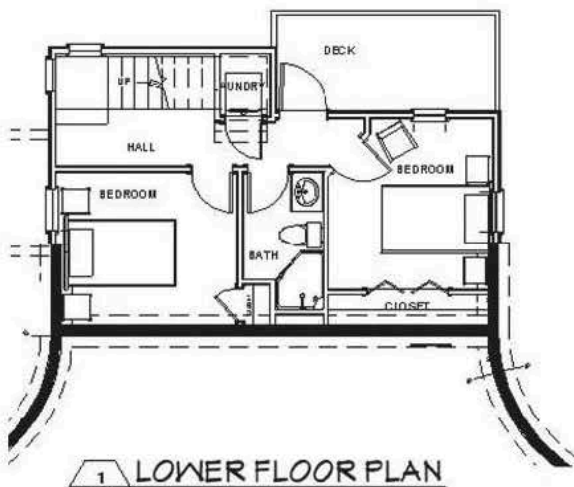
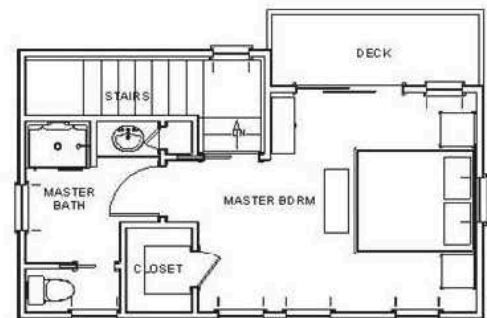
This 3 bedroom 2 1/2 bath Rustic mountain home offers the grand views to the front and rear. American mountain style accents and stone features add to the rustic foyer and carried throughout.....

MAIN LEVEL.....440 SF

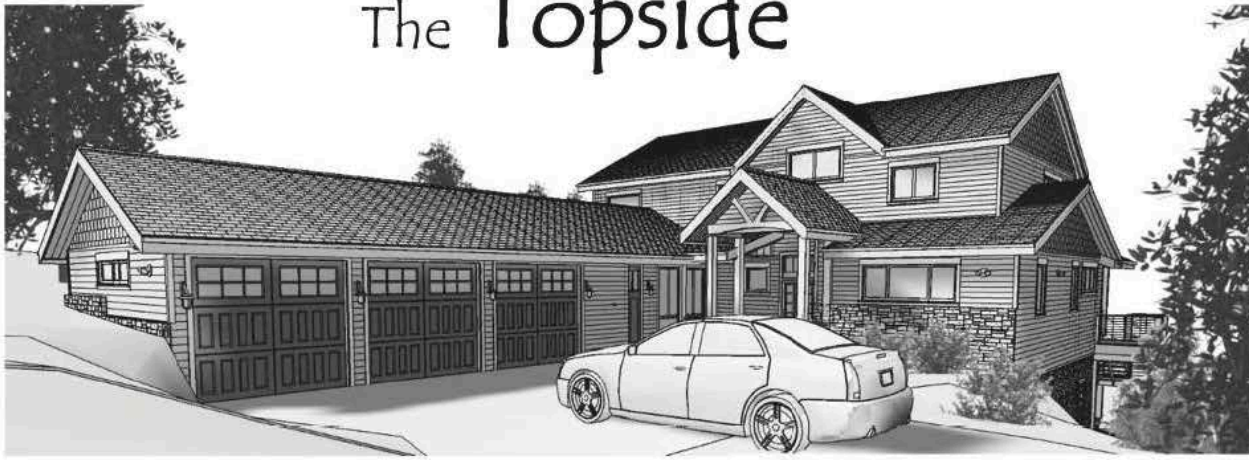
UPPER LEVEL.....308 SF

LOWER LEVEL.....432 SF

TOTAL HEATED SF.....1180 SF



The Topside



Enjoy the moment as you are welcomed by the secure stone covered entry.

This 3 bedroom 3 1/2 bath Rustic mountain home offers the grand views to the front and rear. American mountain style accents and stone features add to the rustic foyer and carried throughout.....

MAIN LEVEL.....1784 SF

LOWER LEVEL780 SF

UPPER LEVEL1228 SF

TOTAL HEATED SF.....3782 SF



The Vista Lake



Exterior Features

- Captivating curb appeal
- The mountain charm of board and batten, poplar bark accents and cedar shake siding
- Beautiful stone accents
- Outdoor stone fireplace
- Tongue & groove exterior wood ceilings
- Spacious open decks

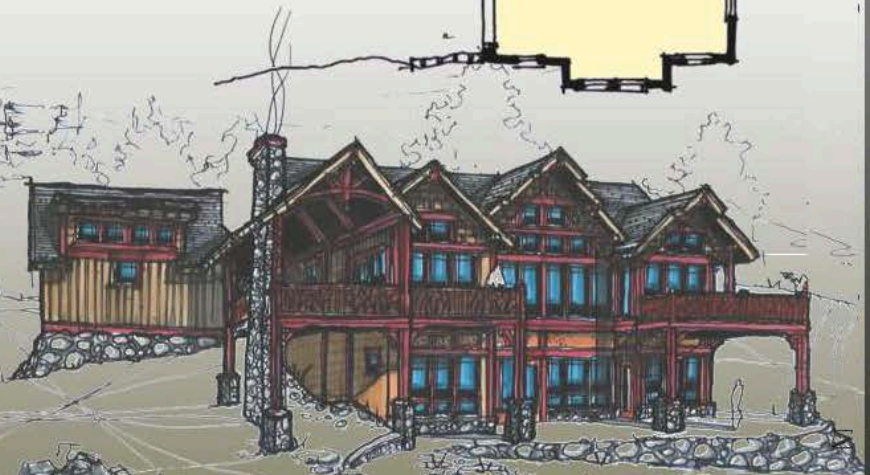
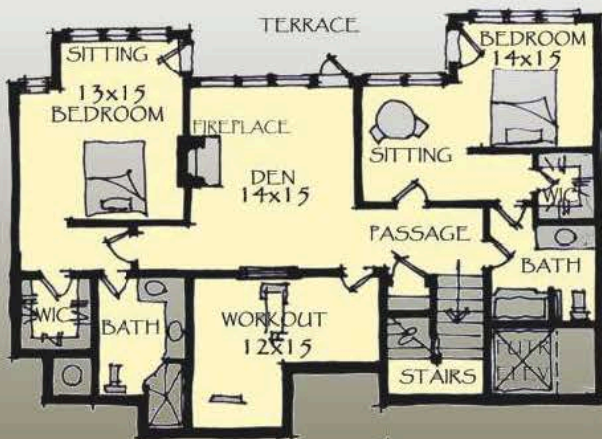


Main level.....1728 sf

Lower level.....1085 sf

Total square footage.....2815 sf

3 br, 3.5 bth



The Tucker Creek



Enjoy the moment as you are welcomed by the secure stone covered entry.

This 3 bedroom 3 1/2 bath Rustic mountain home offers the grand views to the front and rear. American mountain style accents and stone features add to the rustic foyer and carried throughout.....

MAIN LEVEL.....2150 SF
 UPPER LEVEL.....780 SF
 BONUS ROOM.....320SF
TOTAL HSF.....2930 SF





The "BURKHEART BARN"

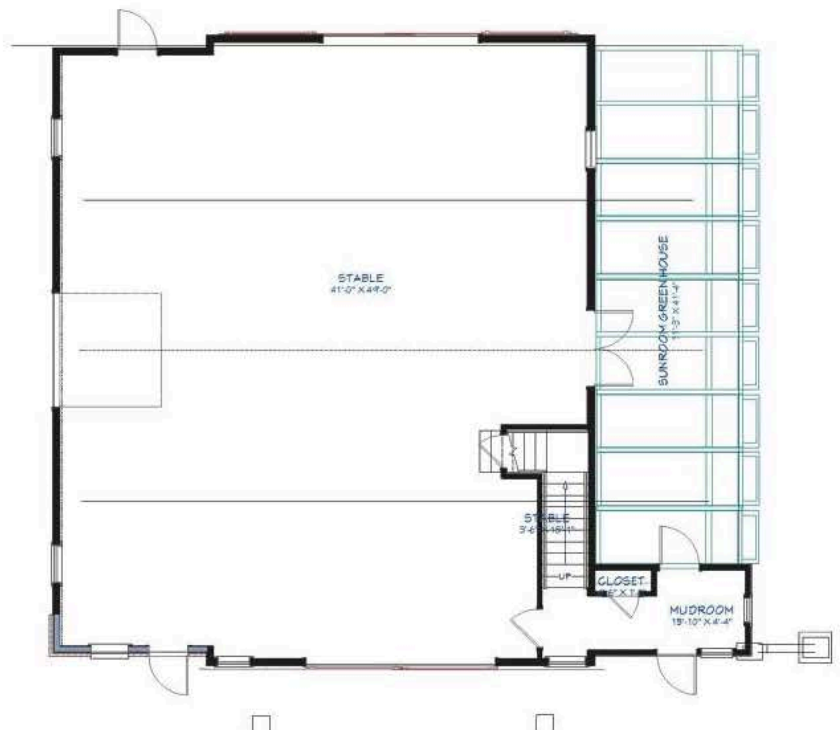
Enjoy the moment as you are welcomed to the farm.

This 1-2 bedroom 1 bath Rustic mountain home offers the grand views to the front and rear. Large lower Barn for RV and boat. American mountain style accents and stone features add to the rustic foyer and carried throughout.....

MAIN LEVEL.....2200 SF

UPPERLEVEL.....1200 SF

TOTAL HEATED SF.....2812 SF



The Rocky Ridge



Grab the moment as you are welcomed by the milled stone covered entry.

This 3 bedroom 2 1/2 bath Rustic mountain home offers the grand views to front and the rear. American mountain style accents and stone features add to the rustic foyer and carried throughout...relax !

82' wide by 70' deep

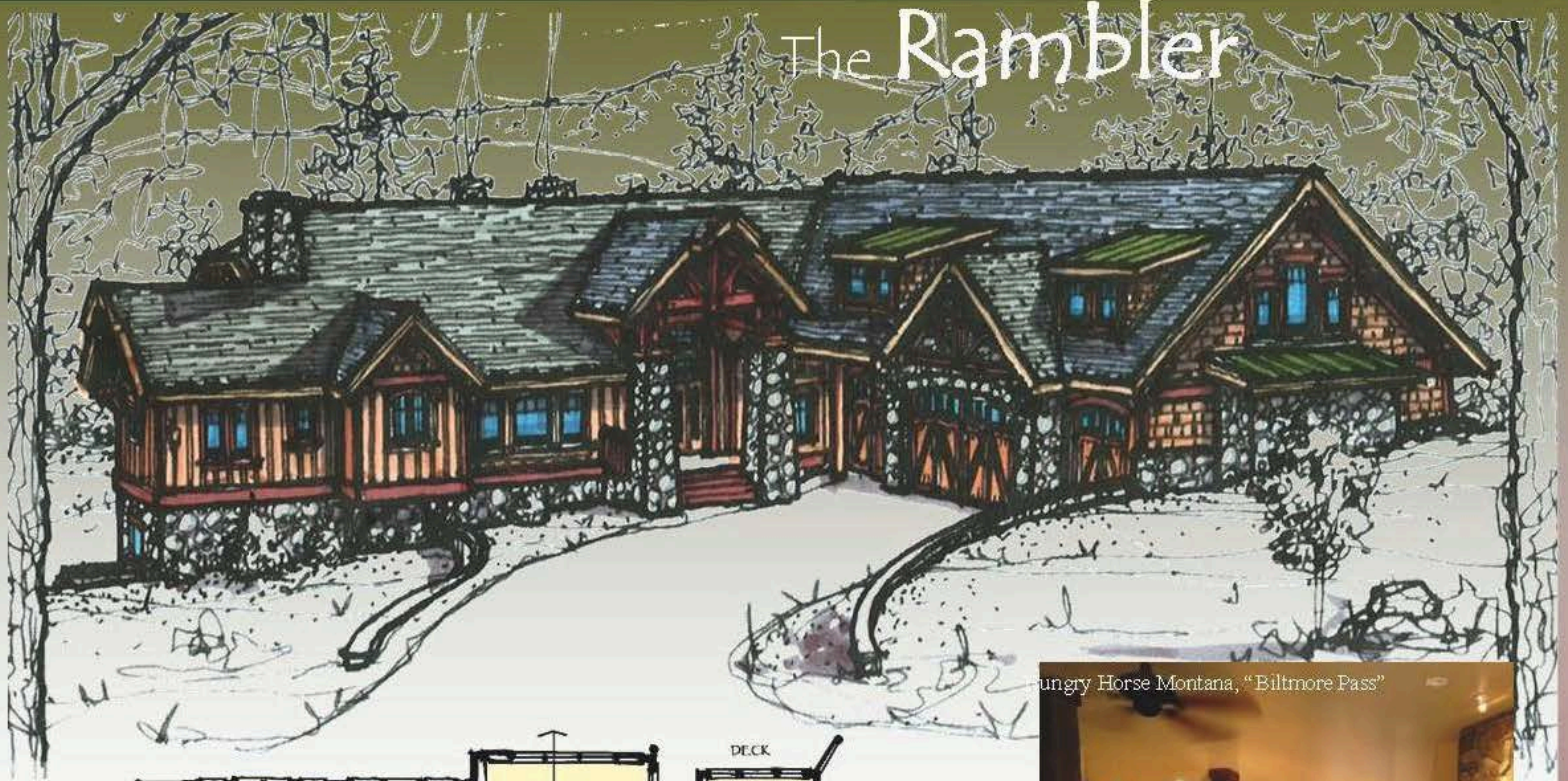
Two story

Main level.....2005 sf

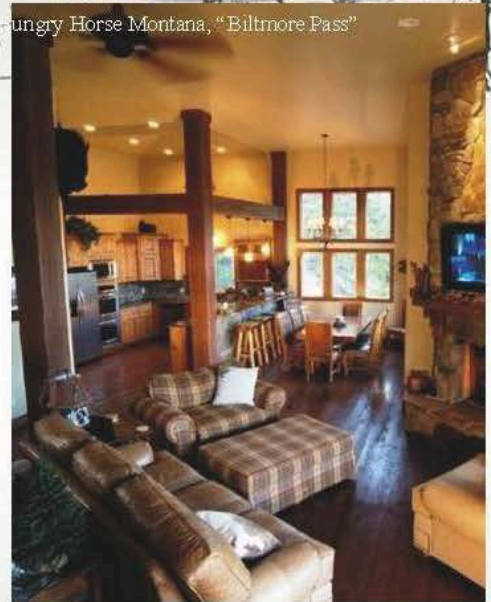
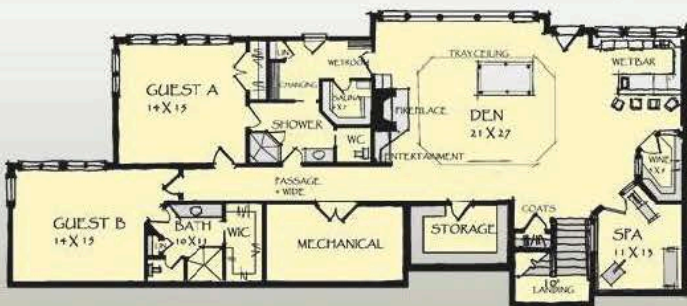
Total square footage.....2005 sf



The Rambler



hungry Horse Montana, "Biltmore Pass"



Memories await you as you are welcomed by the secure covered entries.

This 3 bedroom 2 1/2 bath Rustic mountain home offers Spacious bedrooms with an open layout. American mountain style accents and features add to the rustic foyer and carried throughout..Enjoy !

98'-0" wide by 100' deep

4-car garage

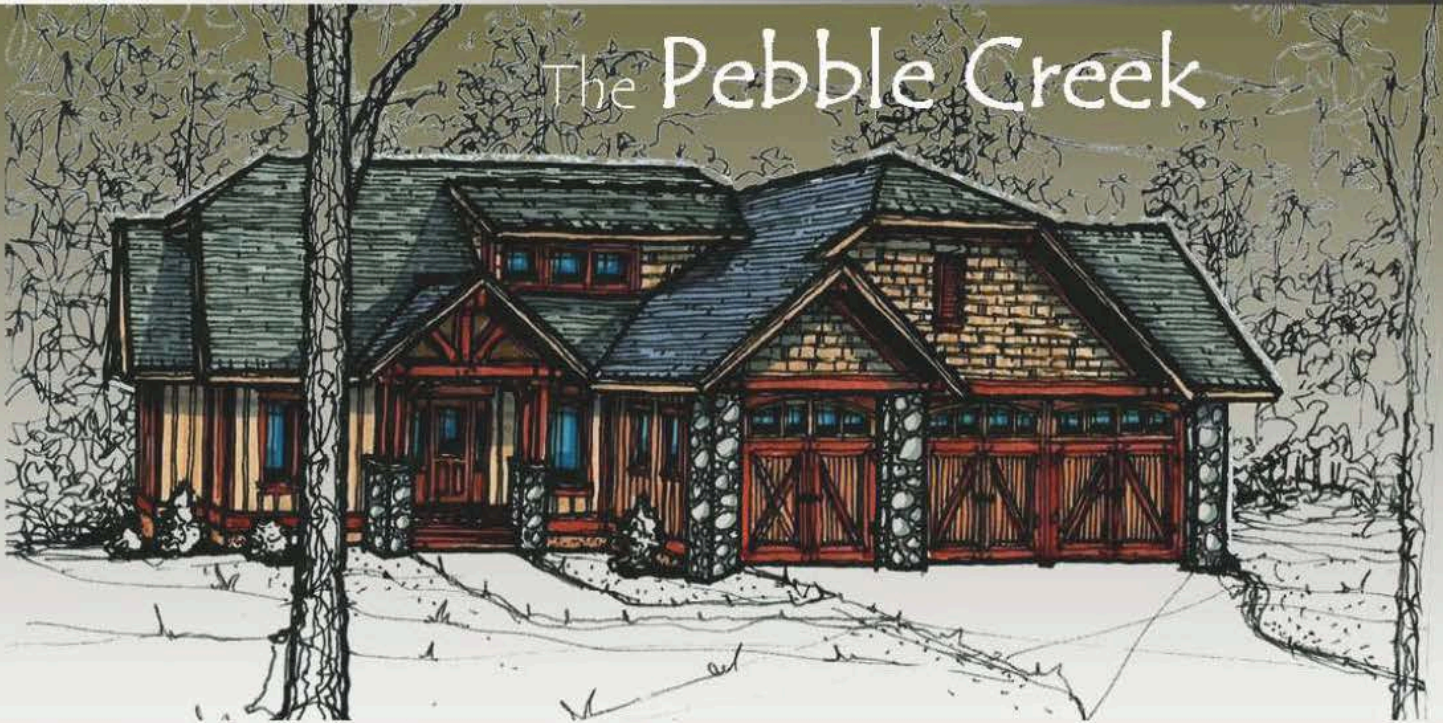
Front & rear covered porch

Main Level S F.....2601 s f

Daylight Basement S F.....1950 s f

Total square footage.....4551 s f

The Pebble Creek



Memories await you as you are welcomed by the secure covered entries.

This 3 bedroom 2 1/2 bath Rustic mountain home offers Spacious bedrooms with an open layout. American mountain style accents and features add to the rustic foyer and carried throughout...Enjoy!

55' wide by 61' deep

3-car garage

Front & rear covered porch

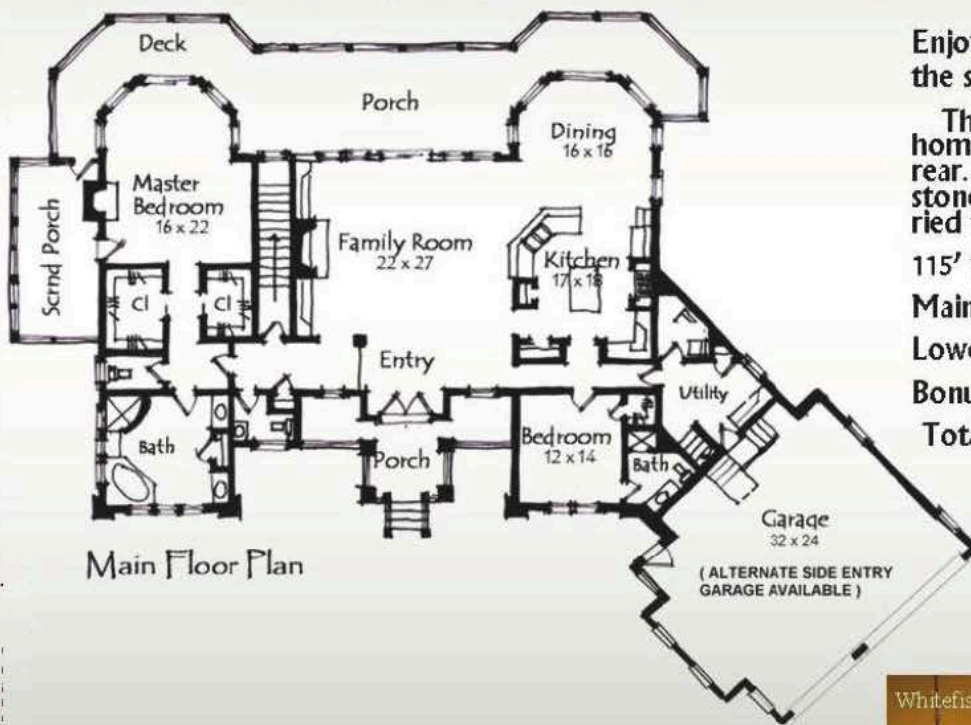
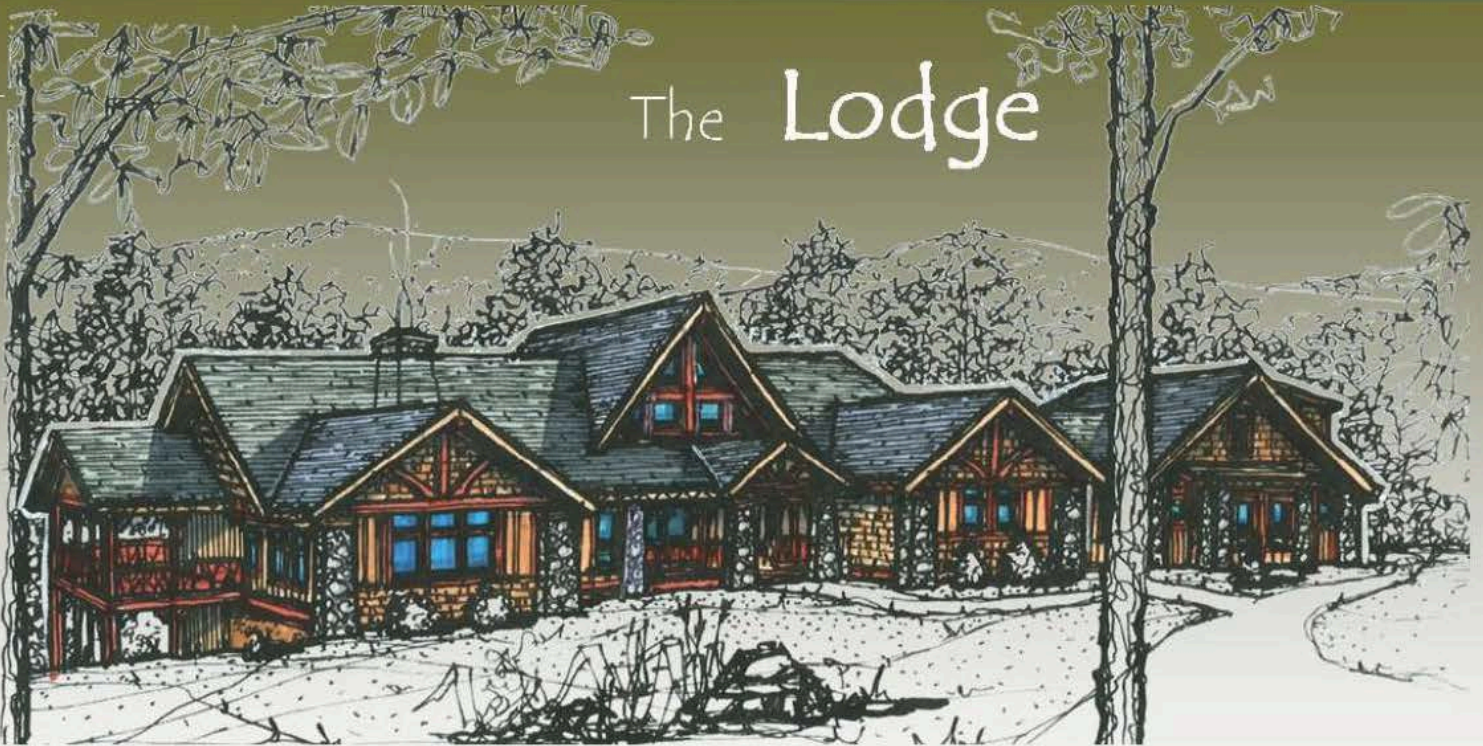
Total square footage.....1901sf



Main Floor Plan



The Lodge



Enjoy the moment as you are welcomed by the secure stone covered entry.

This 4 bedroom 4 1/2 bath Rustic mountain home offers the grand views to the front and rear. American mountain style accents and stone features add to the rustic foyer and carried throughout...grab the views !

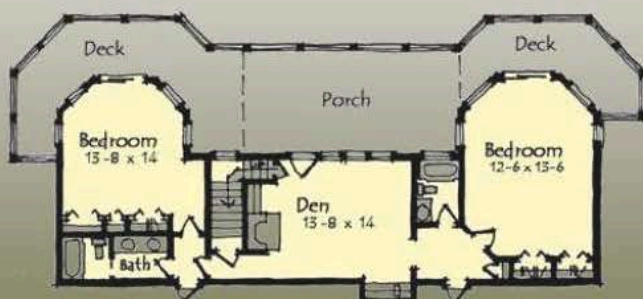
115' wide by 77' deep

Main level.....'3046 sf

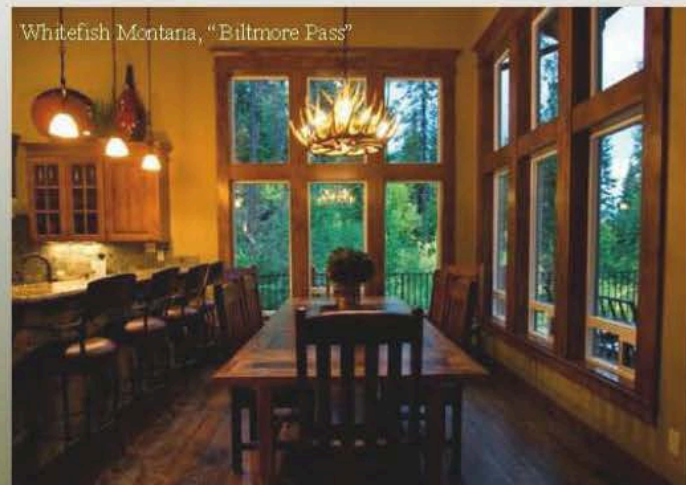
Lower level.....1373 sf

Bonus Room.....436 sf

Total square footage.....4419 sf



Whitefish Montana, "Biltmore Pass"



The Lakeview



Enjoy the moment as you are welcomed by the secure stone covered entry.

This 3 bedroom 3 1/2 bath Rustic mountain home offers the grand views to the front and rear. American mountain style accents and stone features add to the rustic foyer and carried throughout.....

MAIN LEVEL.....1674 SF

LOWER LEVEL.....1121 SF

TOTAL HEATED SF.....2,795 SF



The Knobs Roll



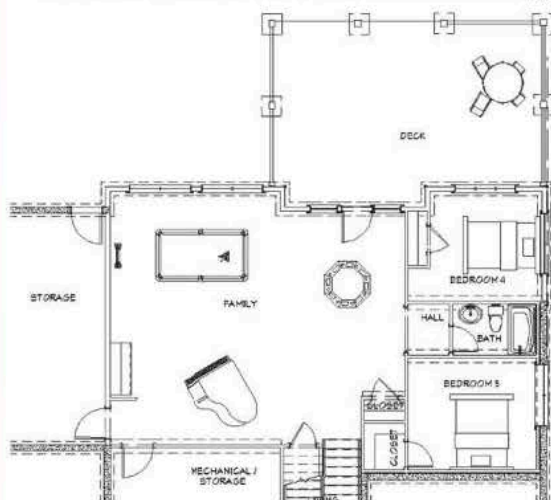
Enjoy the moment as you are welcomed by the secure stone covered entry.

This 3 bedroom 3 1/2 bath Rustic mountain home offers the grand views to the front and rear. American mountain style accents and stone features add to the rustic foyer and carried throughout.....

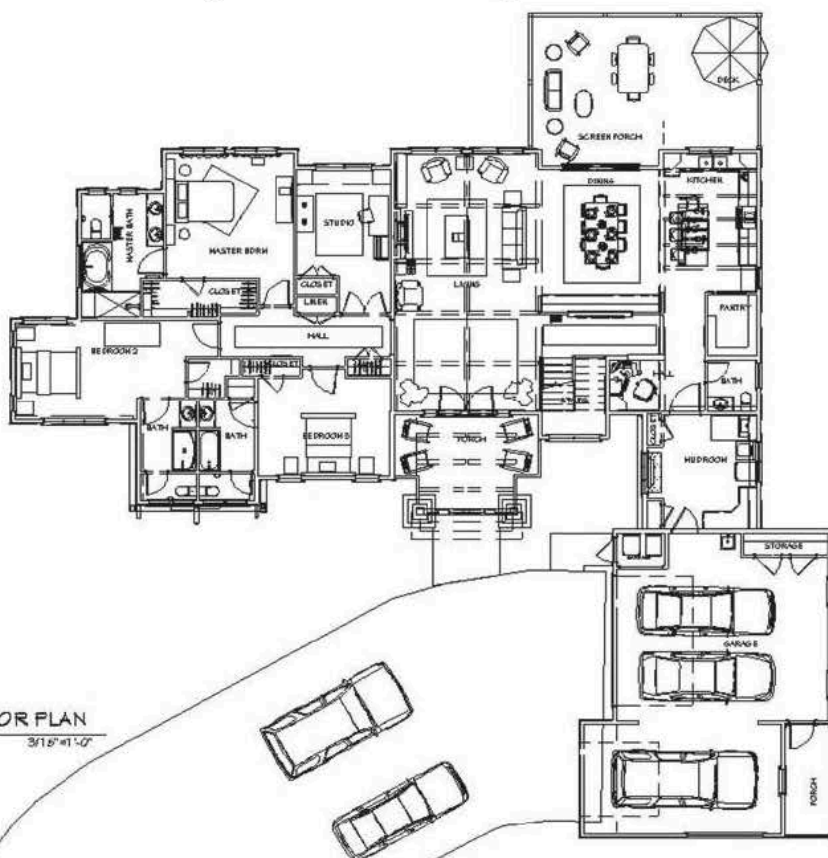
MAIN LEVEL.....3100 SF

LOWER LEVEL.....1200 SF

TOTAL HEATED SF.....4300 SF



MAIN FLOOR PLAN
3/16"=1'-0"



The Lobwoods

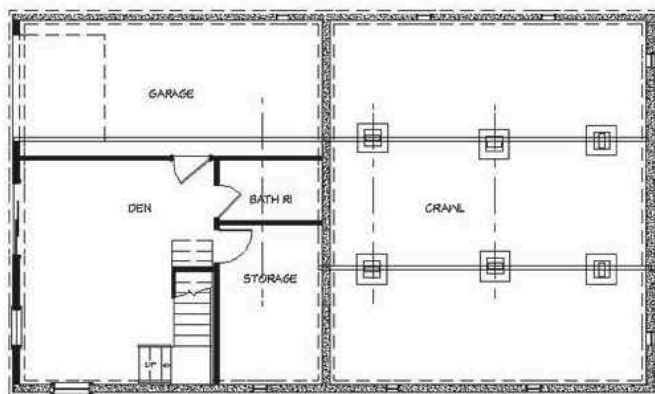


Enjoy the moment as you are welcomed by the secure stone covered entry.

This 3 bedroom 3 1/2 bath Rustic mountain home offers the grand views to the front and rear. American mountain style accents and stone features add to the rustic foyer and carried throughout.....

MAIN LEVEL.....1664 SF

TOTAL HSF.....1664 SF



LIVING AREA
528 SQ FT



The Hannah Hill



Enjoy the moment as you are welcomed by the secure stone covered entry.

This 3 bedroom 3 1/2 bath Rustic mountain home offers the grand views to the front and rear. American mountain style accents and stone features add to the rustic foyer and carried throughout.....

MAIN LEVEL.....1821 SF

LOWER LEVEL (unfinished).....1874 SF

TOTAL SF.....3695 SF



The Ladder Back



Copyright © 2004 John Pinkston Designs

Grab the moment as you are welcomed by the milled stone covered entry.

This 3 bedroom 3 bath Rustic mountain home offers the grand views to the rear. American mountain style accents and stone features add to the rustic foyer and carried through-out.....relax!

70' wide by 78' deep

Two story

Main level.....2468sf

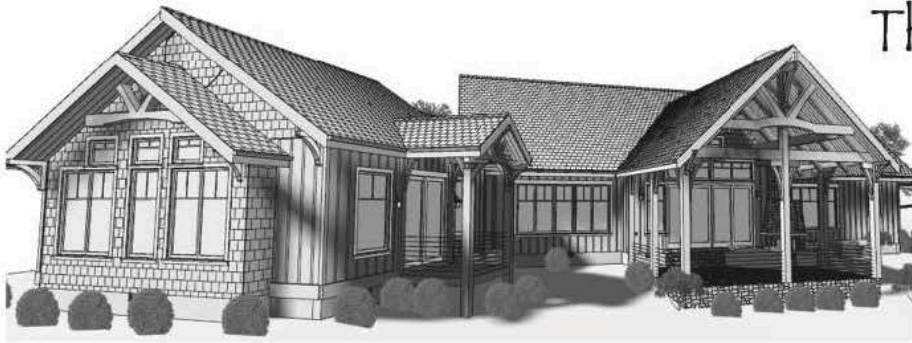
Bonus level.....368sf

Total square footage....2836 sf





The Highlands



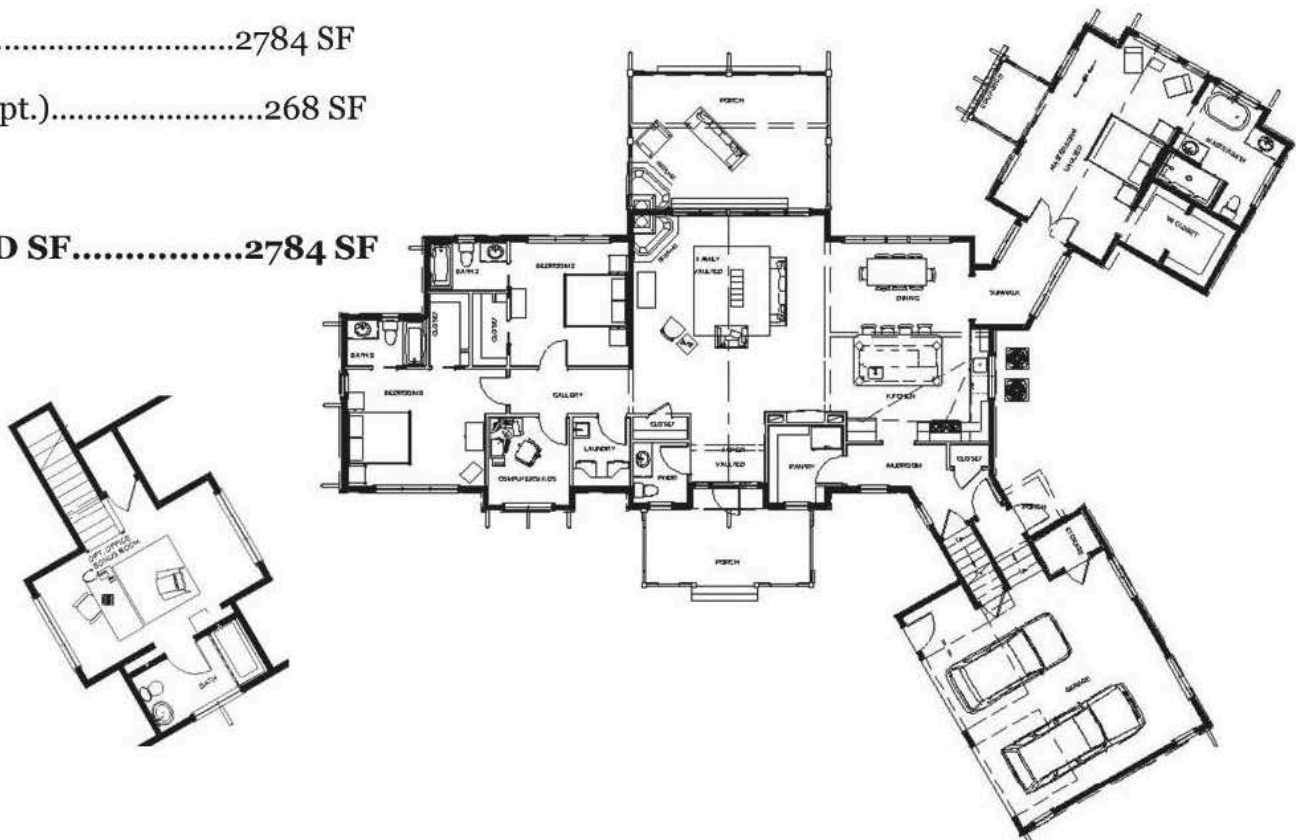
Enjoy the moment as you are welcomed by the secure stone covered entry.

This 3 bedroom 3 1/2 bath Rustic mountain home offers the grand views to the front and rear. American mountain style accents and stone features add to the rustic foyer and carried throughout.....

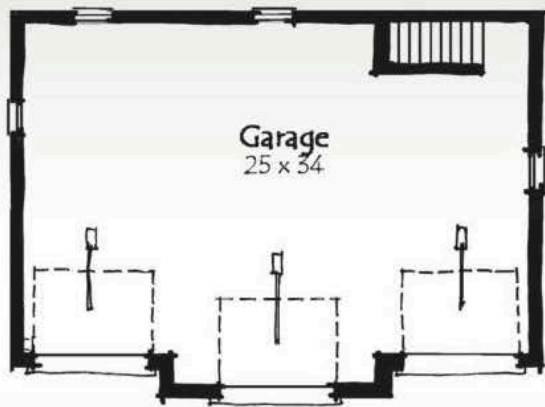
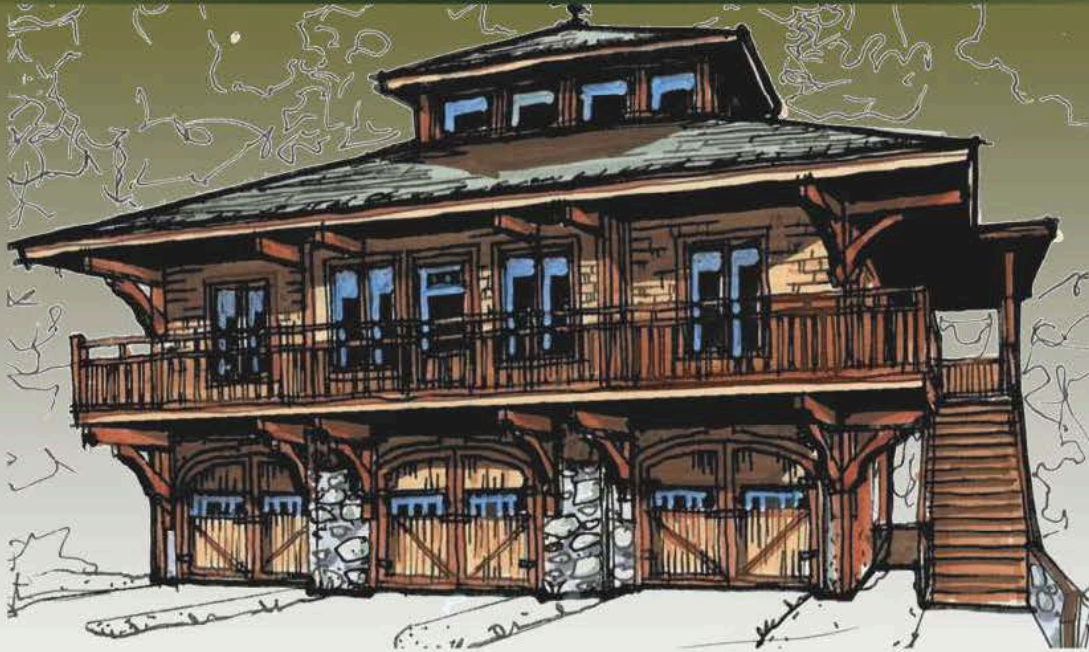
MAIN LEVEL.....2784 SF

UPPER LEVEL (opt.).....268 SF

TOTAL HEATED SF.....2784 SF



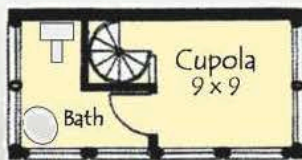
The Grandview



Lower Floor Plan



Main Floor Plan



Floor Plan



At the beach you are welcomed by the secure stone covered entry.

This 2 bedroom 1 1/2 bath Rustic mountain loft retreat that offers the grand views to the front and rear. American mountain style accents and stone features add to the rustic feel carried throughout.....grab the views!

36' wide by 26' deep

Main level.....894sf

Cupola.....172 sf

Total square footage.....1066 sf

The Flatrock



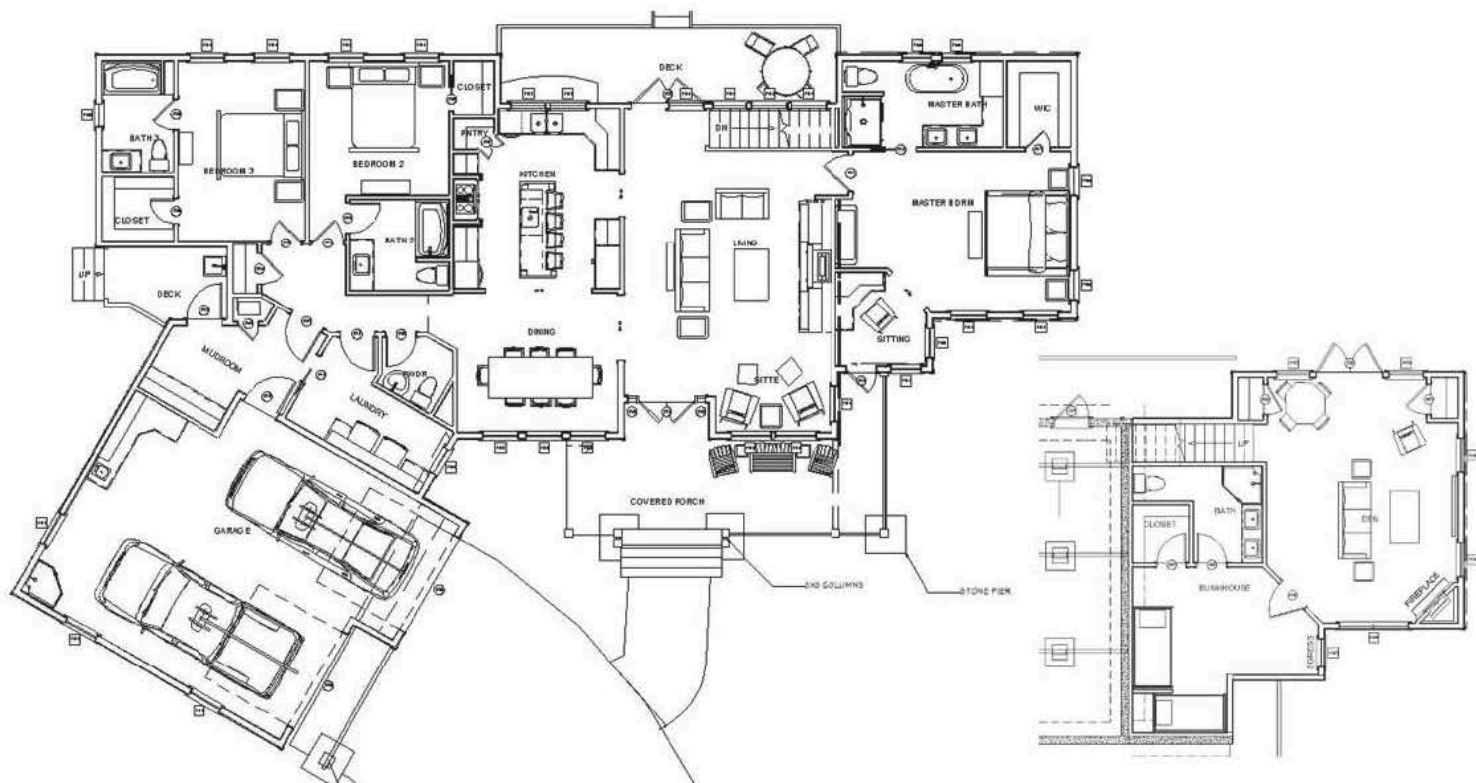
Enjoy the moment as you are welcomed by the secure stone covered entry.

This 3 bedroom 3 1/2 bath Rustic mountain home offers the grand views to the front and rear. American mountain style accents and stone features add to the rustic foyer and carried throughout.....

MAIN LEVEL.....2278 SF

LOWER LEVEL.....668 SF

TOTAL HEATED SF.....2946 SF

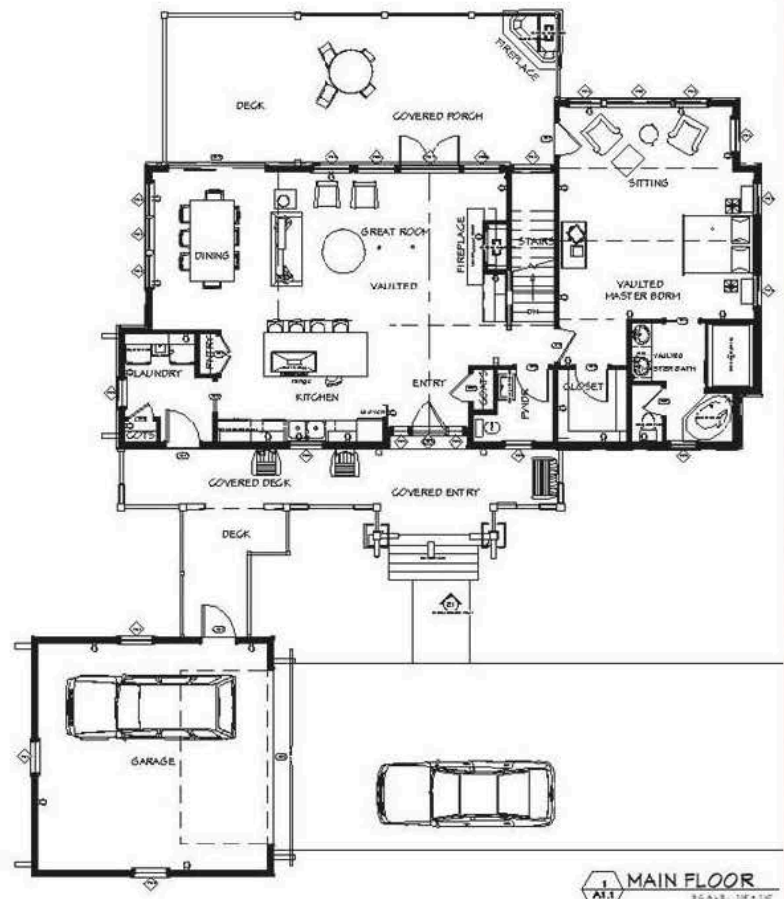




MAIN LEVEL.....1,588 SF

LOWER LEVEL.....1,316 SF

TOTAL HEATED SF.....2,904 SF



The Tamarack



Main Floor Plan

Step back in time to a grander simpler day as you are welcomed by the large covered entry.

This 4 bedroom 4 1/2 bath Rustic mountain home offers the grand views to the rear. American mountain style accents and stone features add to the rustic foyer and carried throughout...What a view!

115' wide by 82' deep

Daylight lower level

Main level.....2804 sf

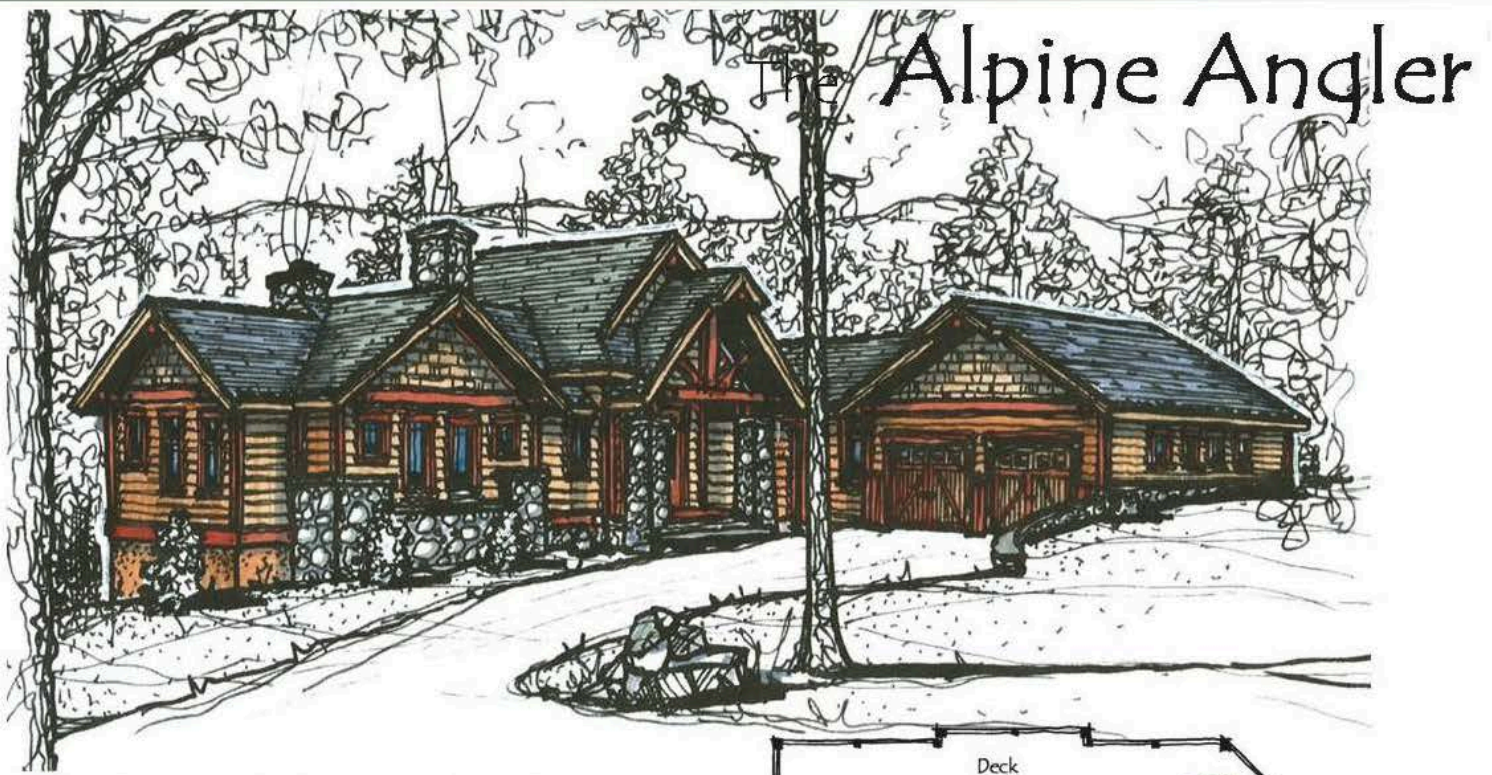
Lower level.....2008 sf

Bonus room.....593 sf

Total heated square footage''.....4812 sf



Spokane, Washington "Tamarack"



Alpine Angler

Grab the moment as you are welcomed by the milled stone covered entry.

This 4 bedroom 3 1/2 bath Rustic mountain home offers the grand views to the rear. American mountain style accents and stone features add to the rustic foyer and carried throughout...relax !

113' wide by 77' deep

Two story

Main level.....3281 sf

lower level.....2142 sf

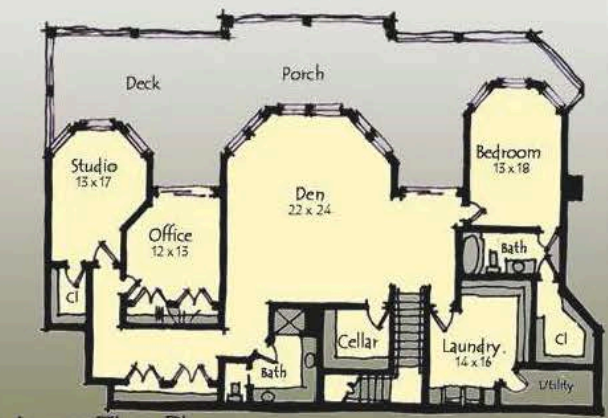
Total square footage.....5423 sf



Main Floor Plan



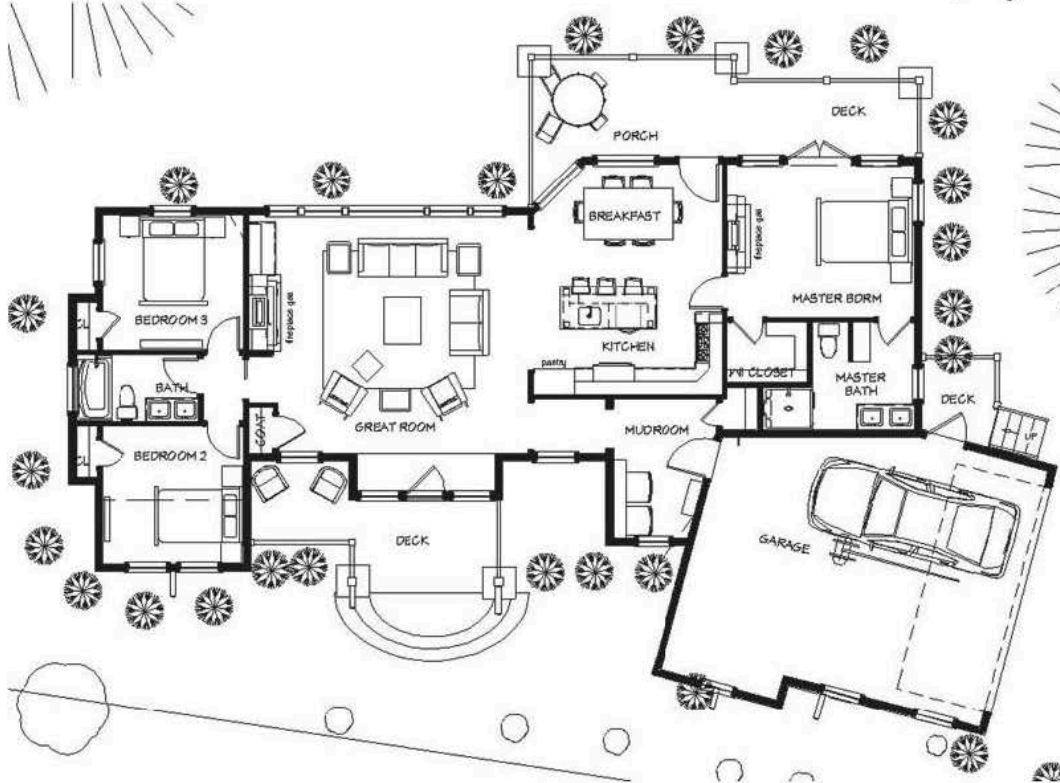
SandPoint, Idaho, "Alpine Angler"



Lower Floor Plan



The "Fender"



Step back in time to a grander simpler day as you are welcomed by the large covered entry.

This 3bedroom 2 1/2 bath Rustic mountain home offers the grand views to the rear. American mountain style accents and stone features add to the rustic foyer and carried throughout...What a view!

76' wide by 64' deep
crawlspace

Main level.....1505 sf

The Falls Ridge



Enjoy the moment as you enter the family room as your vision continues through the rear window wall.

This 4 bedroom 4 bath Rustic mountain home offers the grand views to the front and rear. American mountain style accents and stone features add to the rustic open stairs and carried through-out.....why not!

Main level.....1832 sf 83' wide by 75' deep

Upper level.....454 sf

Lower Level.....1154 sf

Total heated square footage....3440 sf

The Dreamhome



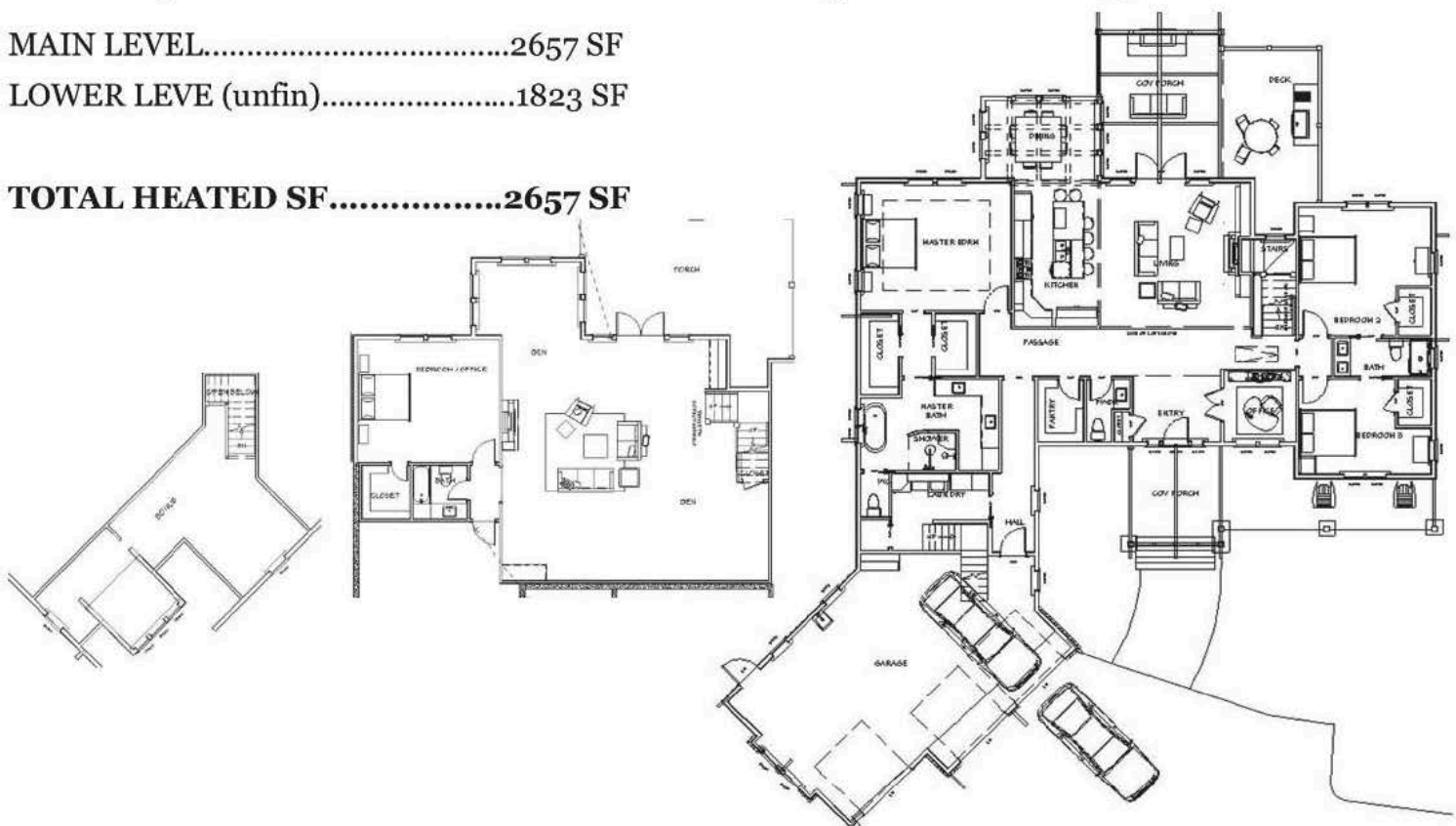
Enjoy the moment as you are welcomed by the secure stone covered entry.

This 3 bedroom 3 1/2 bath Rustic mountain home offers the grand views to the front and rear. American mountain style accents and stone features add to the rustic foyer and carried throughout.....

MAIN LEVEL.....2657 SF

LOWER LEVE (unfin).....1823 SF

TOTAL HEATED SF.....2657 SF





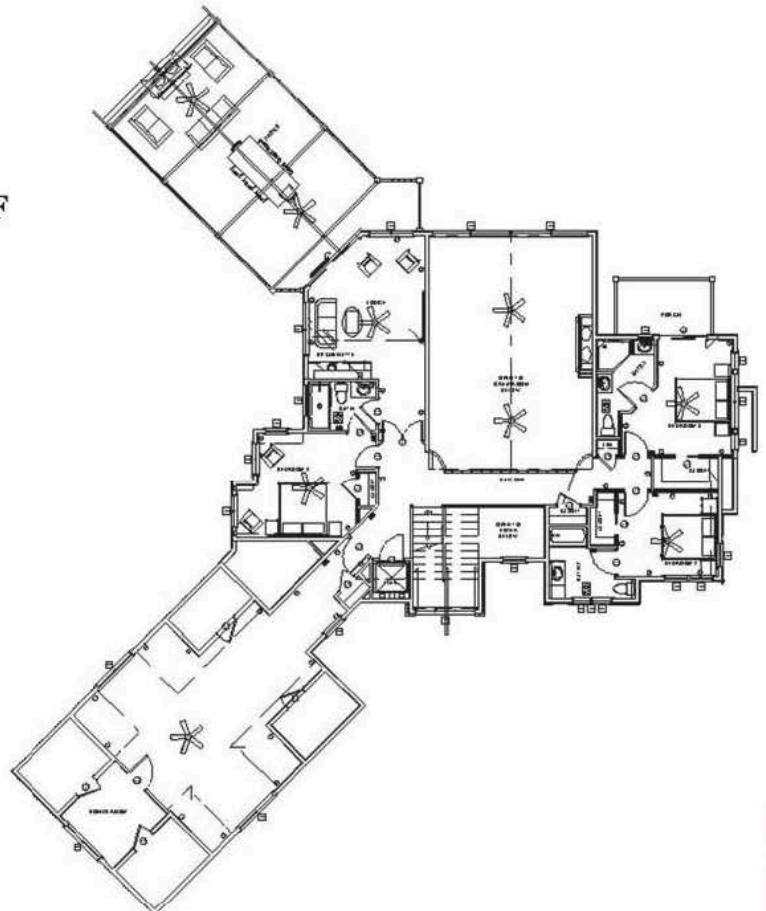
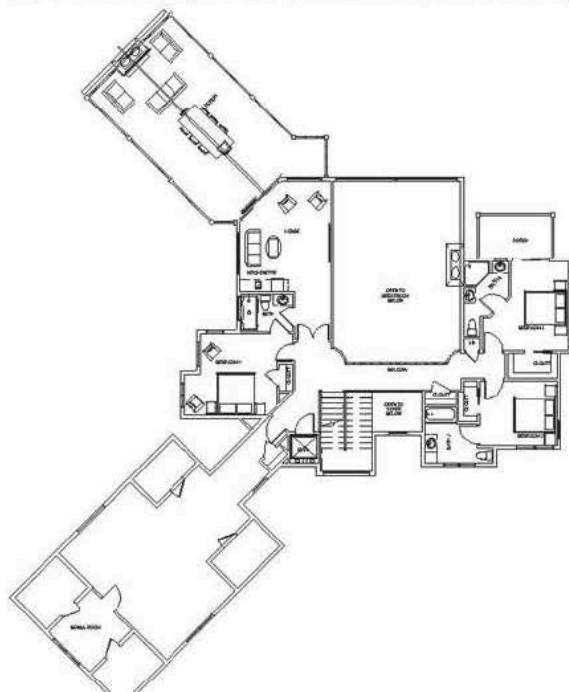
The Cliffs



Enjoy the moment as you are welcomed by the secure stone covered entry.

This 3 bedroom 3 1/2 bath Rustic mountain home offers the grand views to the front and rear. American mountain style accents and stone features add to the rustic foyer and carried throughout.....

MAIN LEVEL.....2720 SF
 UPPER LEVEL.....1460 SF
TOTAL HEATED SF.....4180 SF





The Connestee

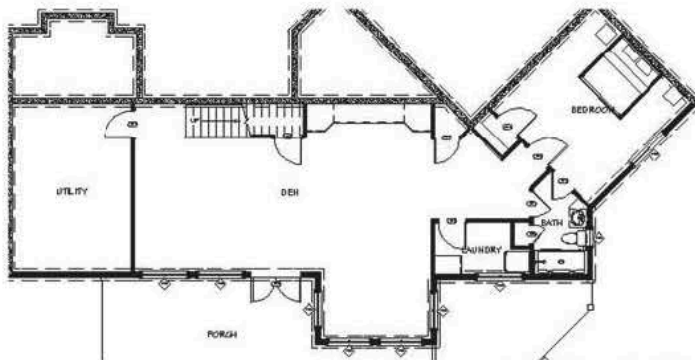
Enjoy the moment as you are welcomed by the secure stone covered entry.

This 3 bedroom 3 1/2 bath Rustic mountain home offers the grand views to the front and rear. American mountain style accents and stone features add to the rustic foyer and carried throughout.....

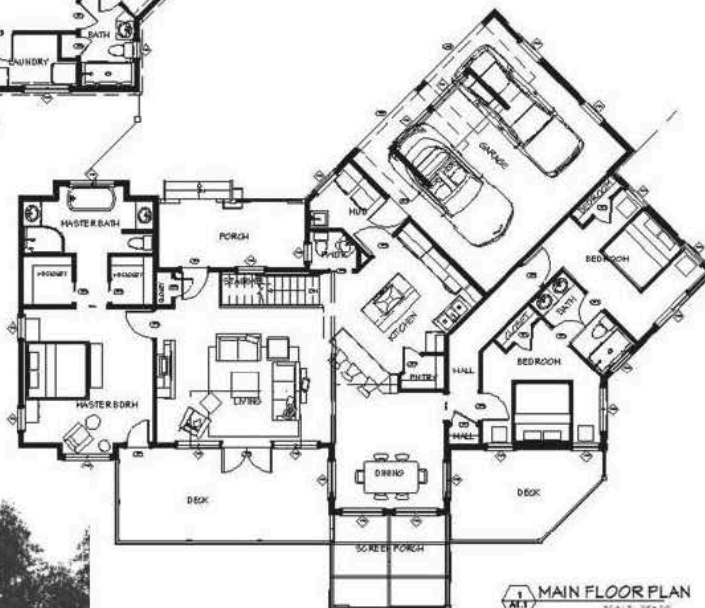
MAIN LEVEL.....1830 SF

LOWER LEVEL (UNFIN.).....1748 SF

TOTAL HEATED SF.....1830 SF



LOWER FLOOR PLAN
UNFINISHED SCALE: 1/8" = 1'-0"



MAIN FLOOR PLAN
SCALE: 1/8" = 1'-0"



The Cottage Cove



3 bedroom 2 1/2 bath

40' wide by 40' deep

Two story

Main level.....945 sf

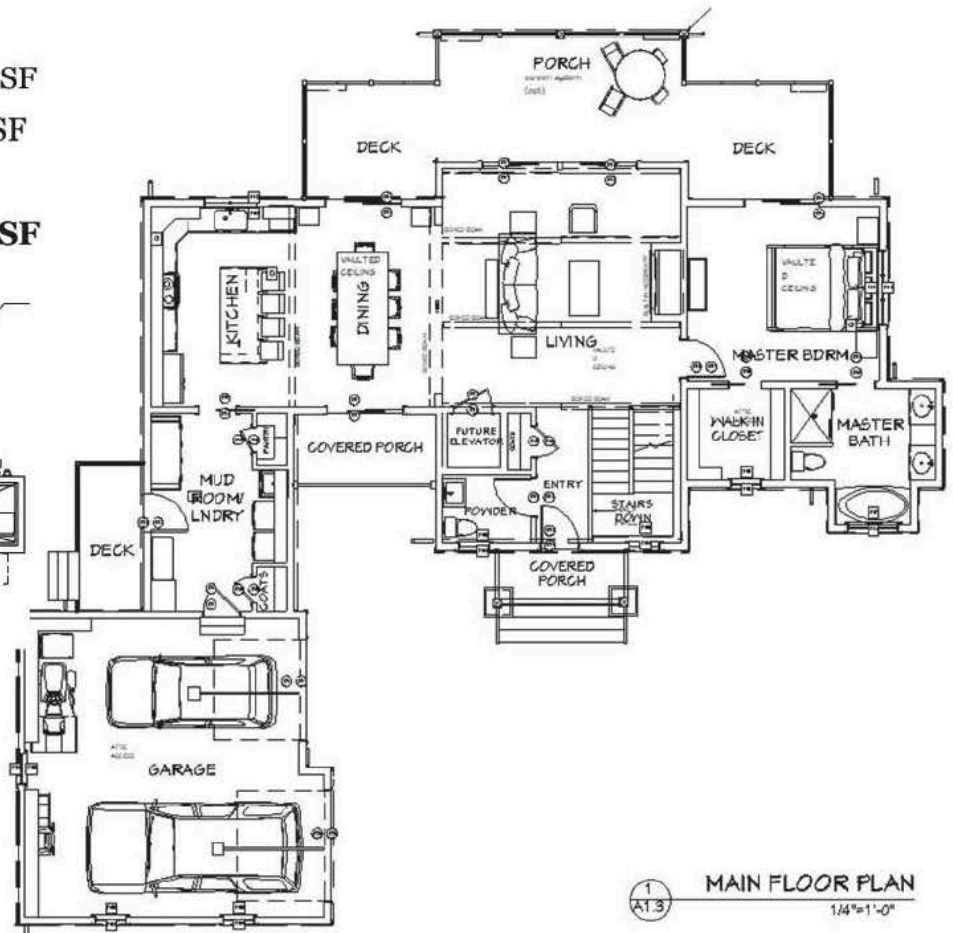
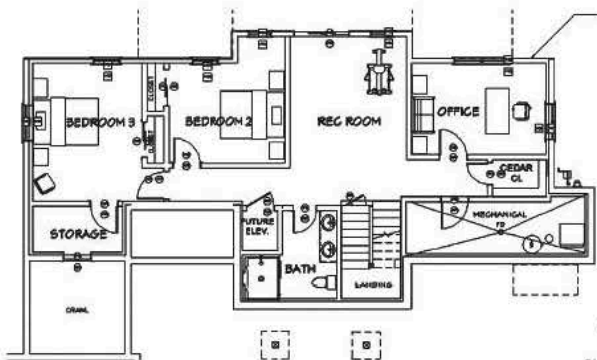
upper level.....625 sf

Approx. square footage....1570 sf

A detailed black and white architectural rendering of a two-story house. The house features a gambrel roof with a small dormer window. The front facade includes a large porch supported by square columns, a central entrance door, and a two-car garage with double doors. The exterior is finished with horizontal siding, and the roof is covered in shingles. The rendering is set against a plain white background.

This 3 bedroom 3 1/2 bath Rustic mountain home offers the grand views to the front and rear. American mountain style accents and stone features add to the rustic foyer and carried throughout.....

TOTAL HEATED SF.....3051 SF



1
A1.3

MAIN FLOOR PLAN

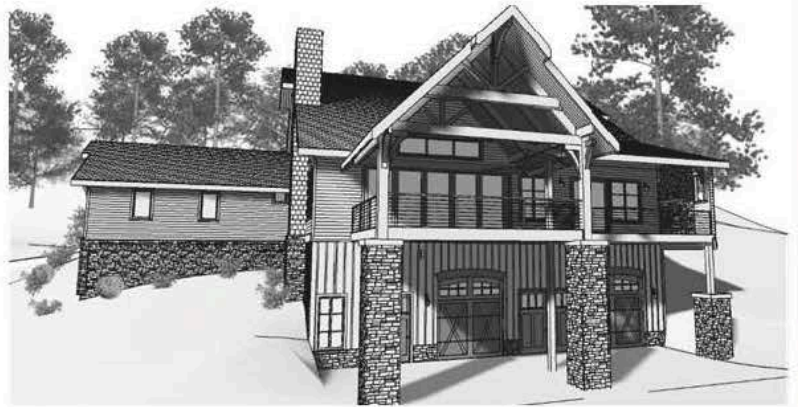
1/4"=1'-0"



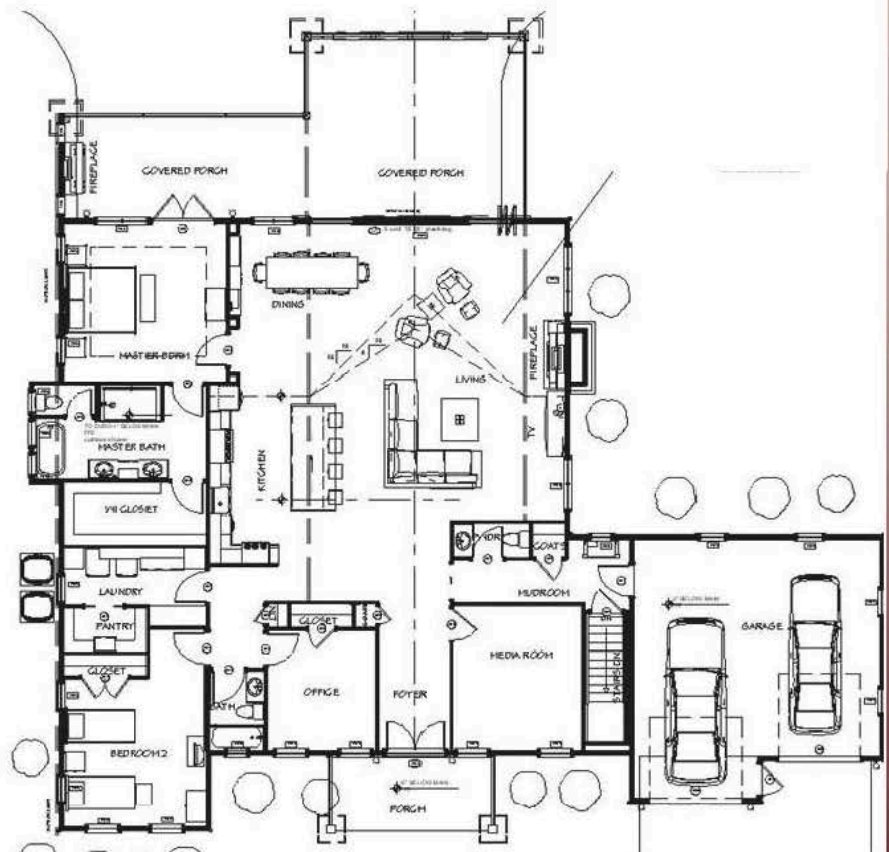
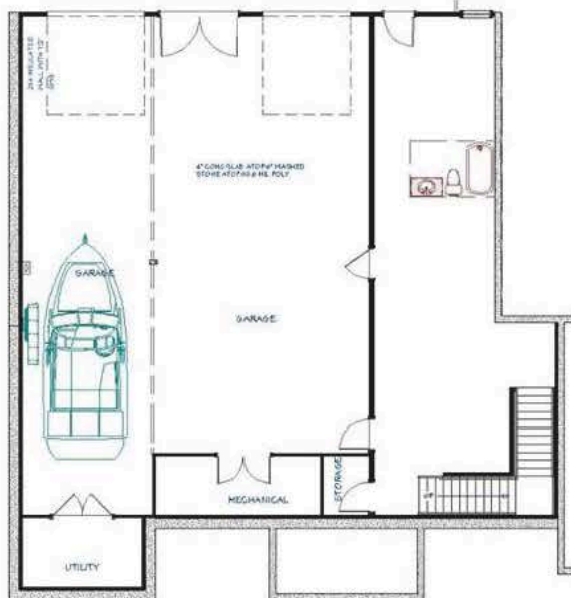
The "Carolina Vista"

Enjoy the moment as you are welcomed by the secure stone covered entry.

This 3 bedroom 2 1/2 bath Rustic mountain home offers the grand views to the front and rear. Large lower Basement for RV. American mountain style accents and stone features add to the rustic foyer and carried throughout.....



MAIN LEVEL.....2812 SF



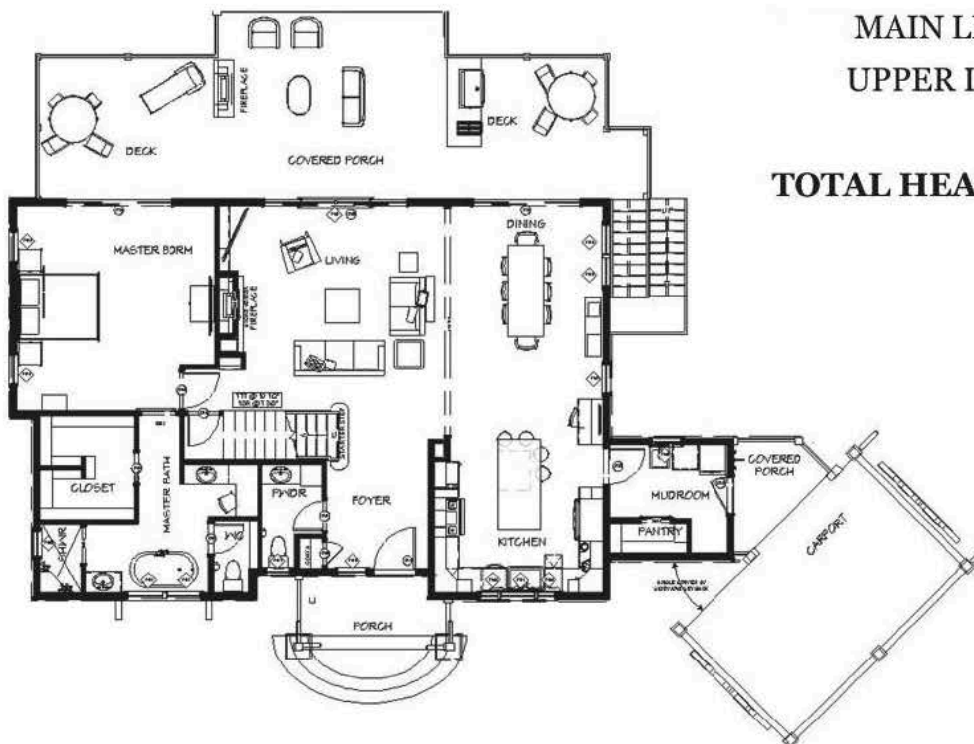


The Cove



Enjoy the moment as you are welcomed by the secure stone covered entry.

This 3 bedroom 3 1/2 bath Rustic mountain home offers the grand views to the front and rear. American mountain style accents and stone features add to the rustic foyer and carried throughout.....



MAIN LEVEL.....1772 SF

UPPER LEVEL.....738 SF

TOTAL HEATED SF.....2510 SF

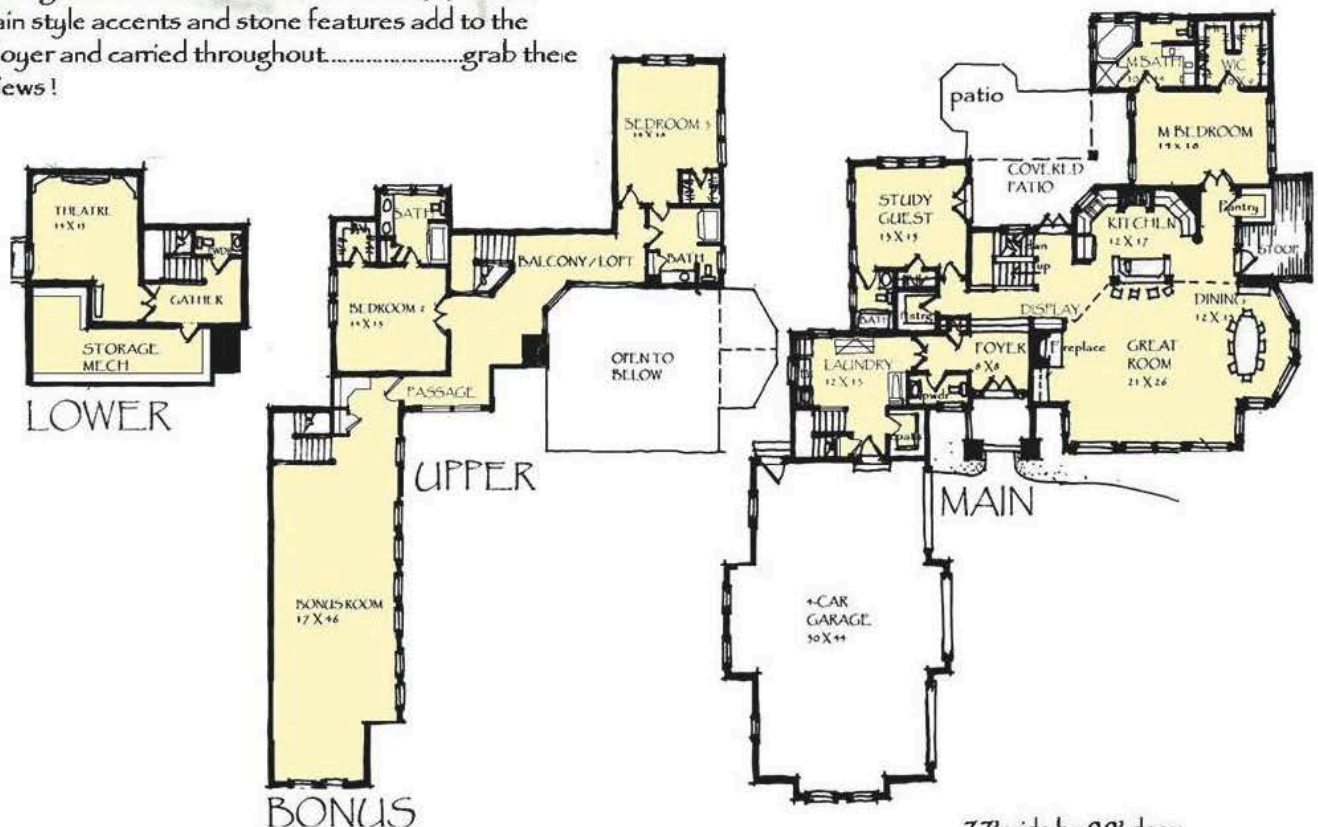




The CASCADE

History of a grander simpler day are welcomed by the secure stone covered entry and grab your attention with the front views.

This 4 bedroom 3 1/2 bath Rustic mountain home offers the grand views to the front and rear. American mountain style accents and stone features add to the rustic foyer and carried throughout.....grab these front views!



77' wide by 99' deep

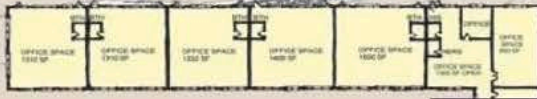
Main level.....2225 sf

Upper level.....684 sf

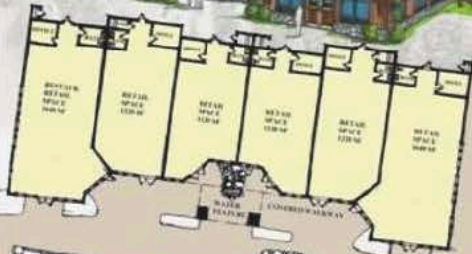
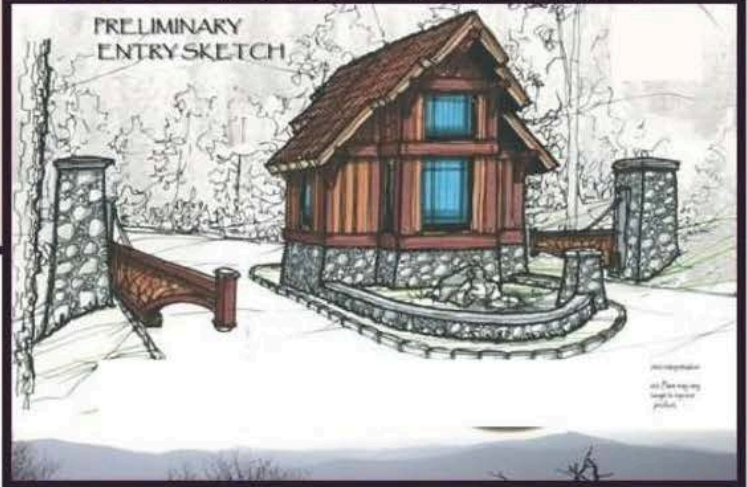
lower level.....322 sf

Bonus room687 sf

Total heated square footage....3918 sf



PRELIMINARY
ENTRY SKETCH



2419 sf
2065 sf
515 sf
412 sf
5207 sf



Upper Guest Room



Cupola Office



Lower Level Plan



Sept 1, 2007



Main Level Plan



The Anglers View

As per integration
of product. Plans may
and change to reflect
product.

STOCK PLAN SERVICES

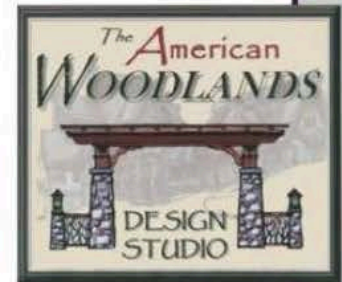
Sept 1, 2007

Main level.....2419 sf
Lower level.....2065 sf
Guest Level.....515 sf
Upper Office level.....412 sf
Una total.....5207 sf

Upper Guest Room Cupola Office

Lower Level Plan

The Angle



The Blowing Rock

Relax on your porch with a gravel stone covered entryway.

This 4 bedroom 3 1/2 bath Rustic mountain home offers the grand views for the front and rear. American mountain style accents and stone features add to the rustic flavor and carried throughout. Even an elevator.....enjoy.

101' wide by 72' deep

Two story

Main level.....2218 sf
Upper level.....1200 sf
Total heated square footage.....4418 sf

Artist interpretation of product. Plans may vary and change to improve product.

JOHN PINKSTON

Oct 15, 2007

Main level.....1790 sf
Lower level.....1267 sf
Upper level.....1518 sf
Una total.....4575 sf

Lower Level

Upper Level

Main Level

The Tarpin Castle



The Sunset View



Enjoy the moment as you are welcomed by the secure stone covered entry.

This 3 bedroom 3 1/2 bath Rustic mountain home offers the grand views to the front and rear. American mountain style accents and stone features add to the rustic foyer and carried throughout.....

MAIN LEVEL.....1212 SF

UPPER LEVEL.....538 SF

TOTAL HEATED SF.....1750 SF

